

HBXL

factsheet

PlansXpress for Colleges



1

HBXL Ltd. | Sales: 0845 1234 065 | Support: 0845 1234 085
Email: sales@hbxl.co.uk | www.hbxl.co.uk



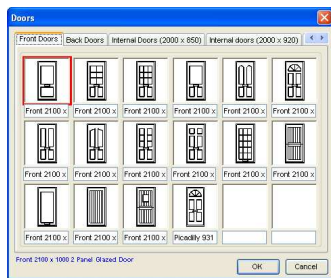
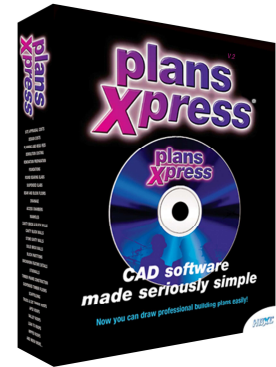


PlansXpress – CAD software overview

Product Summary

PlansXpress enables users to produce architect quality plans and 3D visuals quickly and easily. PlansXpress is made specifically for builders and developers and designed with the complete computer novice in mind.

Pre-populated with hundreds of Architectural symbols, many of which are parametric, the student can quickly and intuitively layout multiple design options in 2D using various forms of construction and architecture, based on the client brief and then generate automatic elevations and 3D models.



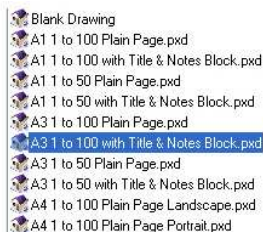
PlansXpress is suitable for designing extensions, new build, loft conversions, renovation work, placing services and plumbing and electrics or simply room layouts.

It produces building regulation compliant working drawings including sections and notes when combined with EstimatorXpress.

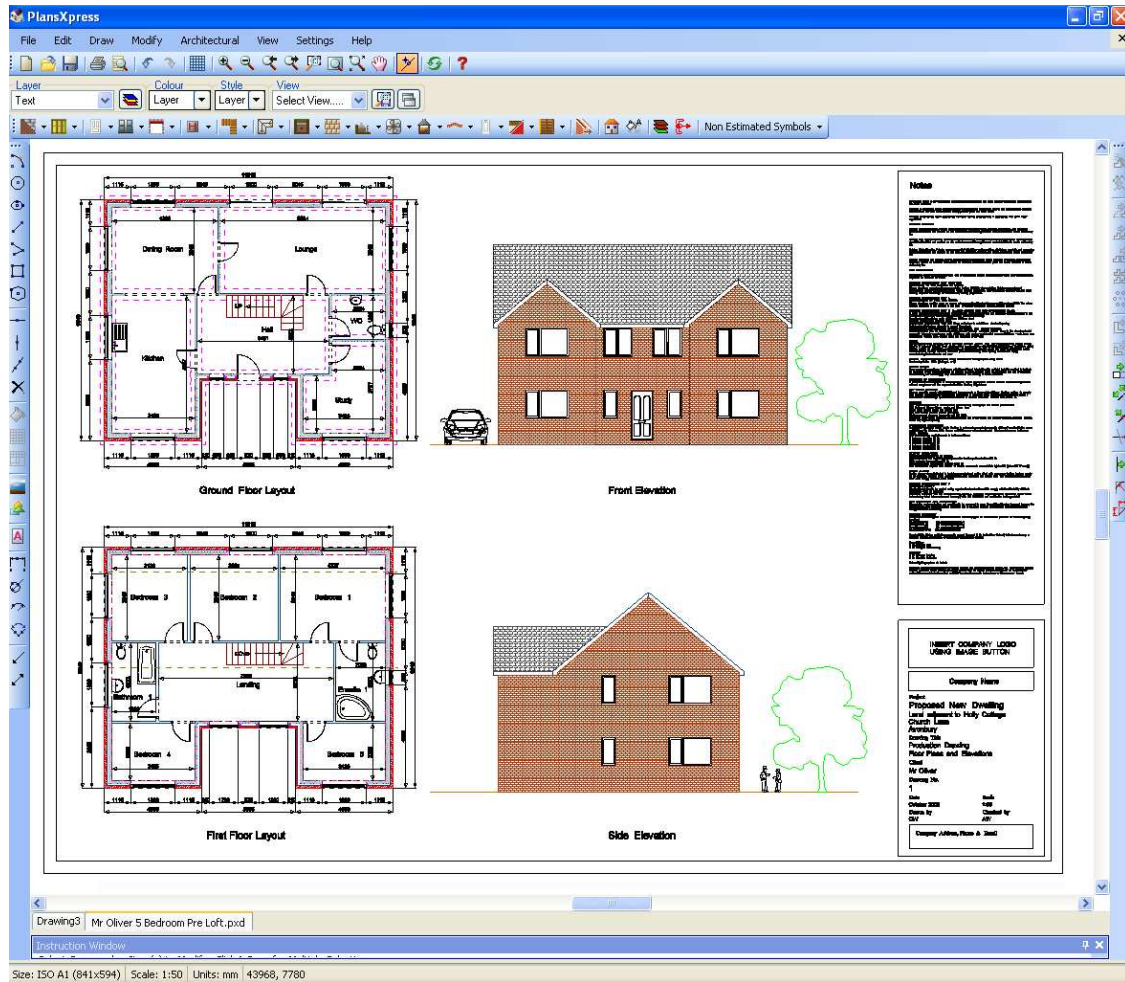
HBXL currently retail 2 editions – PlansXpress Lite edition and PlansXpress Total Toolkit edition.

PlansXpress – Supporting Further Education Courses

Students will experience the use of basic commands including set-up/drawing/editing/zoom commands, layers, line weights, drawing scales and plotting and exporting to DWG/DXF/DWF/PDF/JPG/BMP/GIF/WMF/VRML/3DXF file formats and importing of DWG/DXF/BMP/JPG files.



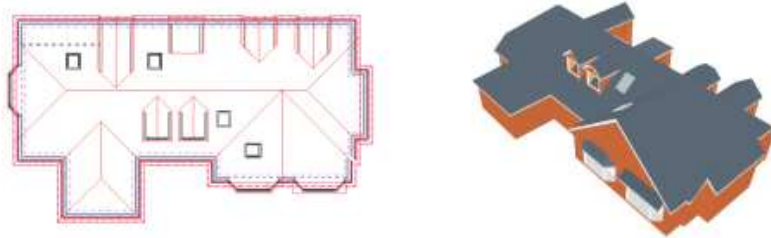
Very quickly students can also learn how to prepare production Architectural drawings and details including manual and auto-dimensioning, use of standard symbols and creation and storage of user created symbols.





factsheet

3D Models can be created of the design using an integrated 3D system, export to Google SketchUp and Cortona VRML and 3DXF Formats.



Roof complete with dormers and roof windows designed using PlansXpress

PlansXpress allows for the preparation of fabrication drawings using a core line drawing toolset and associated entity manipulation tools.

Preparation of free hand sketches can be exported to HBXL's SketchXpress which prepares simulated freehand sketches from CAD drawings – essential for builders and designers to win business!



With PlansXpress students can also learn how to practically prepare service layouts using integrated plumbing and electrical toolsets.



**HBXL****factsheet**

Each Architectural symbol in PlansXpress is associated with a fully detailed and costed building component in EstimatorXpress which means students can see how the design impacts the estimate.

Design and Estimate at the same time!

Designs can then be quickly exported into HBXL's EstimatorXpress, where a detailed material specification using live product data is selected based on either standard details or the students preferred materials to meet client and regulatory requirements.

EstimatorXpress then automatically generates a detailed estimate populated with live product information together with a highly detailed customer quotation and a range of other essential reports and graphs to assist with the appraisal of the design and management of the project.

The system also generates suggested drawing specification notes for importing into the PlansXpress drawing and the resulting drawings and documentation can then be used to make a formal Planning Applications and submissions to Building Regulations.

For a full information pack, brochure and/or demonstration contact:

Marc Brady

HBXL Sales Manager

Email: marc.brady@hbxl.co.uk

Tel: 0117 916 7854