

**HBXL**

**factsheet**

# ***EstimatorXpress for Colleges***



1

HBXL Ltd. | Sales: 0845 1234 065 | Support: 0845 1234 085  
Email: sales@hbxl.co.uk | www.hbxl.co.uk

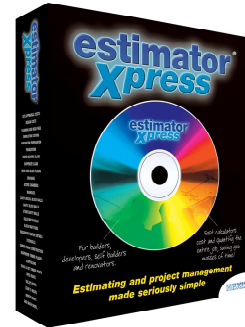


## EstimatorXpress – estimating software overview

### Product Summary

EstimatorXpress software produces accurate, professional estimates quickly, easily and accurately. It has been designed to be used by the SME builder and developer specialising in the construction of new homes, extensions, refurbishments, loft conversions and small scale commercial buildings.

It is the only estimating software in the UK to link directly to live merchant prices and the software will generate detailed cost and profit breakdowns together with professional customer quotes proven to help builders improve their win rate by 230%.



EstimatorXpress also produces full material schedules with all products specified, quantities required, supplier, price, product code and order-by-date to help with advanced ordering of building materials.

HBXL currently retail 2 editions for general builders – EstimatorXpress Lite edition and EstimatorXpress Total Toolkit edition as well as a range for specific trades (launching Spring 2010) including:

- **EstimatorXpress Plumbing & Heating Trade edition**
- **EstimatorXpress Plastering & Decorating Trade edition**
- **EstimatorXpress Groundworks & Landscaping Trade edition**
- **EstimatorXpress Roofing Trade edition**

### EstimatorXpress – Supporting Further Education Courses

EstimatorXpress builds up the cost of the project from first principles and allows the student to see the complete build up of every component in the building project. This is therefore extremely informative to the student helping them to understand how the entire project fits together.



# factsheet

The estimate is built up with a raft of automated tools to make the process very straightforward once the student has already been trained to understand core estimating principles.

## Price Book:

All resources (Materials, Labour and Plant etc.) are stored in a Central Library Price book.

Description	List Price	Discount	Adjustment	Unit of Supply	Purchase Cost	Supplier	Wastage	Date	Type
Ballast Bulk Bag	£ 40.00	0.00%	0.00%	EA	£ 40.00	HBXL Price Tracker	10.00%	July 2, 2009	Aggregate
Building Sand Bulk Bag	£ 40.00	0.00%	0.00%	EA	£ 40.00	HBXL Price Tracker	10.00%	July 2, 2009	Aggregate
Building Sand Standard Bag	£ 3.20	0.00%	0.00%	EA	£ 3.20	HBXL Price Tracker	10.00%	July 2, 2009	Aggregate
Rin Drivd Sand Standard Bag	£ 5.00	0.00%	0.00%	EA	£ 5.00	HBXL Price Tracker	10.00%	July 2, 2009	Aggregate
Pea Gravel Bulk Bag	£ 44.00	0.00%	0.00%	EA	£ 44.00	HBXL Price Tracker	10.00%	July 2, 2009	Aggregate
Plastering Sand Bulk Bag	£ 43.00	0.00%	0.00%	EA	£ 43.00	HBXL Price Tracker	10.00%	July 2, 2009	Aggregate
Sharp Sand Bulk Bag	£ 41.00	0.00%	0.00%	EA	£ 41.00	HBXL Price Tracker	10.00%	July 2, 2009	Aggregate
Sharp Sand Standard Bag	£ 3.20	0.00%	0.00%	EA	£ 3.20	HBXL Price Tracker	10.00%	July 2, 2009	Aggregate
Sub Base MOT Type 1 Bulk Bag	£ 44.00	0.00%	0.00%	EA	£ 44.00	HBXL Price Tracker	10.00%	July 2, 2009	Aggregate
Tarmac 20mm base course (16 to 20 Tonne) (Allowance E75)	£ 75.00	0.00%	0.00%	Tonne	£ 75.00	HBXL Price Tracker	10.00%	July 2, 2009	Aggregate
Tarmac 28mm base course (16 to 20 Tonne) (Allowance E70)	£ 80.00	0.00%	0.00%	Tonne	£ 80.00	HBXL Price Tracker	10.00%	July 2, 2009	Aggregate
Tarmac 40mm wearing course (16 to 20 Tonne) (Allowance E80)	£ 300.00	0.00%	0.00%	Tonne	£ 300.00	HBXL Price Tracker	5.00%	July 2, 2009	Appliances
Dishwasher (Allowance E300)	£ 500.00	0.00%	0.00%	EA	£ 500.00	HBXL Price Tracker	5.00%	July 2, 2009	Appliances
Freezer - Built In (Allowance E500)	£ 400.00	0.00%	0.00%	EA	£ 400.00	HBXL Price Tracker	5.00%	July 2, 2009	Appliances
Fridge Freezer (Allowance E400)	£ 200.00	0.00%	0.00%	EA	£ 200.00	HBXL Price Tracker	5.00%	July 2, 2009	Appliances
Gas Hob (Allowance E230)	£ 70.00	0.00%	0.00%	EA	£ 70.00	HBXL Price Tracker	5.00%	July 2, 2009	Appliances
Kitchen Extractor Fan (Allowance E70)	£ 400.00	0.00%	0.00%	EA	£ 400.00	HBXL Price Tracker	5.00%	July 2, 2009	Appliances
Microwave (Allowance E400)	£ 700.00	0.00%	0.00%	EA	£ 700.00	HBXL Price Tracker	5.00%	July 2, 2009	Appliances
Oven - Built In (Allowance E700)	£ 12.00	0.00%	0.00%	EA	£ 12.00	HBXL Price Tracker	7.50%	July 2, 2009	Bathroom
Bath Grip Pack Universal	£ 24.00	0.00%	0.00%	EA	£ 24.00	HBXL Price Tracker	7.50%	July 2, 2009	Bathroom
Bath Panel 1500mm	£ 20.00	0.00%	0.00%	EA	£ 20.00	HBXL Price Tracker	7.50%	July 2, 2009	Bathroom
Bath Panel 1700mm	£ 36.00	0.00%	0.00%	EA	£ 36.00	HBXL Price Tracker	7.50%	July 2, 2009	Bathroom
Bath Panel 1800mm	£ 11.00	0.00%	0.00%	EA	£ 11.00	HBXL Price Tracker	7.50%	July 2, 2009	Bathroom
Bath Panel 600mm	£ 19.00	0.00%	0.00%	EA	£ 19.00	HBXL Price Tracker	7.50%	July 2, 2009	Bathroom
Bath Ungripped 2TH 1500mm x 700mm	£ 103.00	0.00%	0.00%	EA	£ 103.00	HBXL Price Tracker	7.50%	July 2, 2009	Bathroom
Bath Ungripped 2TH 1700mm x 700mm	£ 150.00	0.00%	0.00%	EA	£ 150.00	HBXL Price Tracker	7.50%	July 2, 2009	Bathroom
Bathroom Pack - Bath, Sink, Shower, Toilet (Allowance E150)	£ 250.00	0.00%	0.00%	EA	£ 250.00	HBXL Price Tracker	7.50%	July 2, 2009	Bathroom
Bathroom Pack-3 Piece - Bath, Sink, Toilet (Allowance E250)	£ 351.00	0.00%	0.00%	EA	£ 351.00	HBXL Price Tracker	7.50%	July 2, 2009	Bathroom
Bow Fronted Bath 2TH 1700mm x 750mm	£ 36.00	0.00%	0.00%	EA	£ 36.00	HBXL Price Tracker	7.50%	July 2, 2009	Bathroom
Bow Fronted Bath Panel 1700mm	£ 19.00	0.00%	0.00%	EA	£ 19.00	HBXL Price Tracker	7.50%	July 2, 2009	Bathroom
Bow Fronted Bath Panel 750mm	£ 125.00	0.00%	0.00%	EA	£ 125.00	HBXL Price Tracker	7.50%	July 2, 2009	Bathroom
Cloakroom Pack - Sink, Toilet (Allowance E125)	£ 100.00	0.00%	0.00%	EA	£ 100.00	HBXL Price Tracker	7.50%	July 2, 2009	Bathroom
Close Coupled Fan and Cistern (Allowance E100)	£ 250.00	0.00%	0.00%	EA	£ 250.00	HBXL Price Tracker	7.50%	July 2, 2009	Bathroom
Close Coupled Fan and Cistern (Allowance E250)	£ 482.00	0.00%	0.00%	EA	£ 482.00	HBXL Price Tracker	7.50%	July 2, 2009	Bathroom
Contemporary Freestanding Bath 1750mm x 790mm	£ 125.00	0.00%	0.00%	EA	£ 125.00	HBXL Price Tracker	7.50%	July 2, 2009	Bathroom
Contemporary Freestanding Bath Feet	£ 200.00	0.00%	0.00%	EA	£ 200.00	HBXL Price Tracker	7.50%	July 2, 2009	Bathroom
Deep Fill Bath 2TH 1700mm x 750mm	£ 400.00	0.00%	0.00%	EA	£ 400.00	HBXL Price Tracker	7.50%	July 2, 2009	Bathroom
Digital Mixer Shower (Allowance E400)	£ 351.00	0.00%	0.00%	EA	£ 351.00	HBXL Price Tracker	7.50%	July 2, 2009	Bathroom
Double Ended Bath 2TH 1800mm x 800mm									

Material descriptions, units of supply, costs, discounts and lead times are accessed and maintained from HBXL's website which is provided with over 400,000 products provided by the UK's leading building merchants. The user can also add their own unique products at any time.

Labour, plant and subcontract resources for the various trades and gangs can be maintained by the user to reflect local rates. Sundry items can similarly be added.

## Specifications:

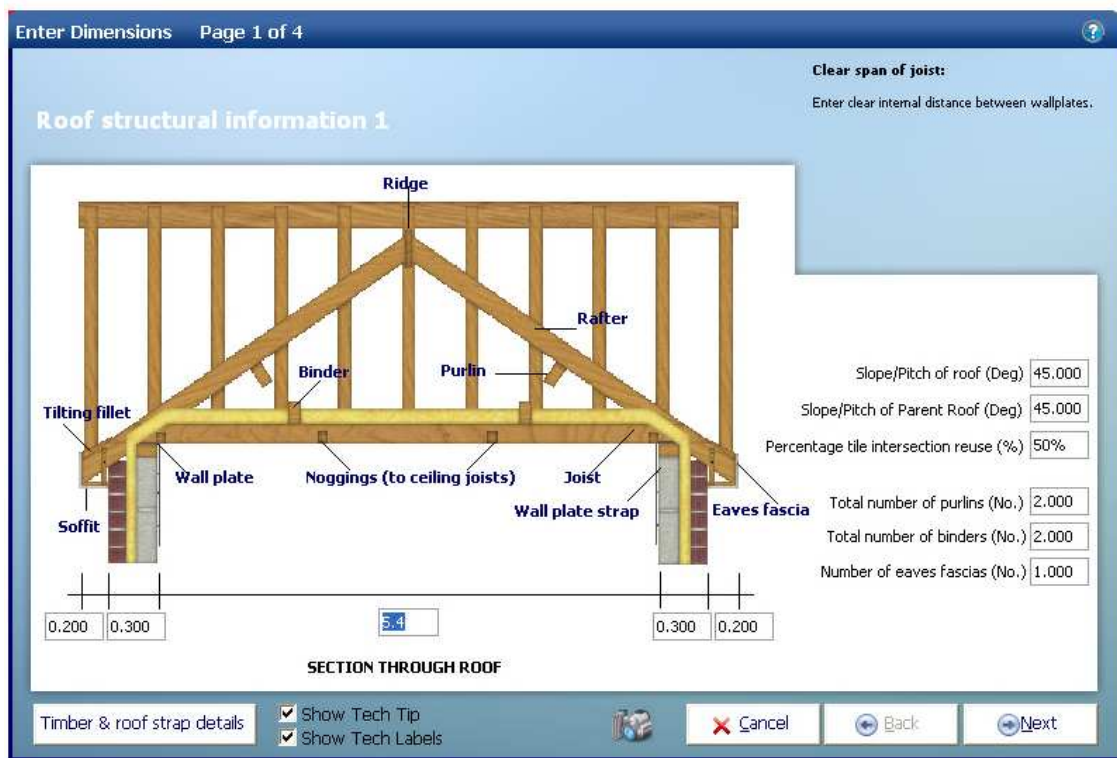
The specifications for the job can be selected from HBXL's library of standard specifications or created by the user. The user is able to define the production factors to establish the rates for



each resource in the specification to reflect the project requirements. Varying specifications and rates for different types of work can be stored for reuse in the specification library.

### Dimensional information:

Dimensional information for a component in the project (e.g., An Apex Roof or Cavity Wall) is entered into Workbooks using an easy to use graphical interface which clearly demonstrates how each building component fits together.



The interface is thoroughly annotated with building terminology to assist in identifying the various components. The system records all relevant geometry of the major components in the building and, using detailed calculations, estimates lengths, areas and volumes and automatically schedules the timber requirements for stud walls, roofs and floors.



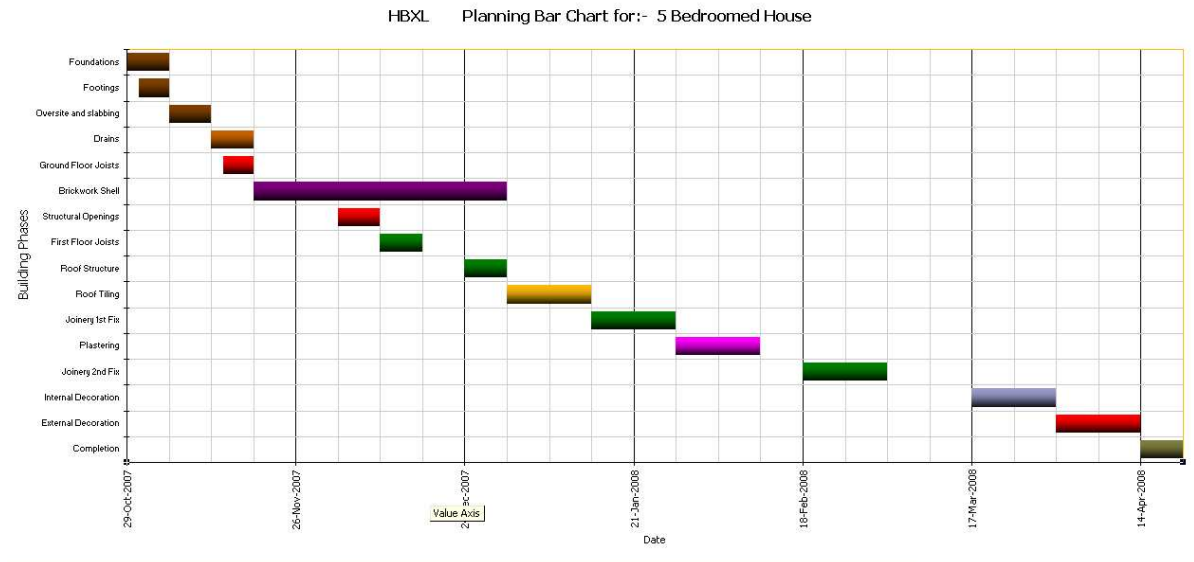
# factsheet

## Profit, overhead and impact of inflation:

The user can define the mark up, overhead and impact of inflation on the project to provide a wide range of outputs, reports and quotation formats.

## Project planning:

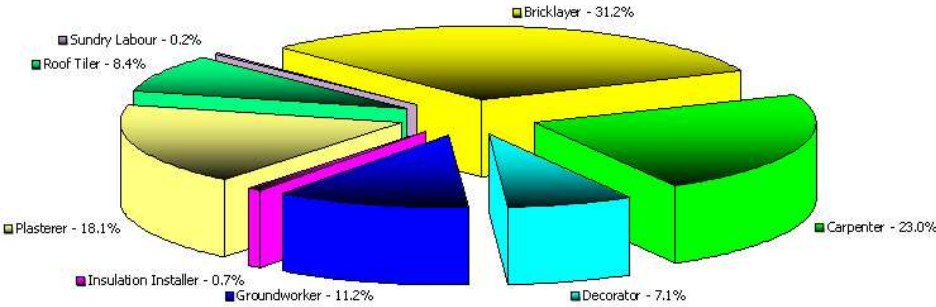
An integrated Gantt chart allows the user to manage the progress of the project in order to assess the impact of inflation on the project and provide various build phase related reports.





EstimatorXpress then combines the output from the Price Book, Specification, Workbooks, Profit & Overhead and the Gantt chart to generate a detailed estimate in a series of graphs, reports, schedules and various quotation formats.

### Breakdown of Profit by Trade



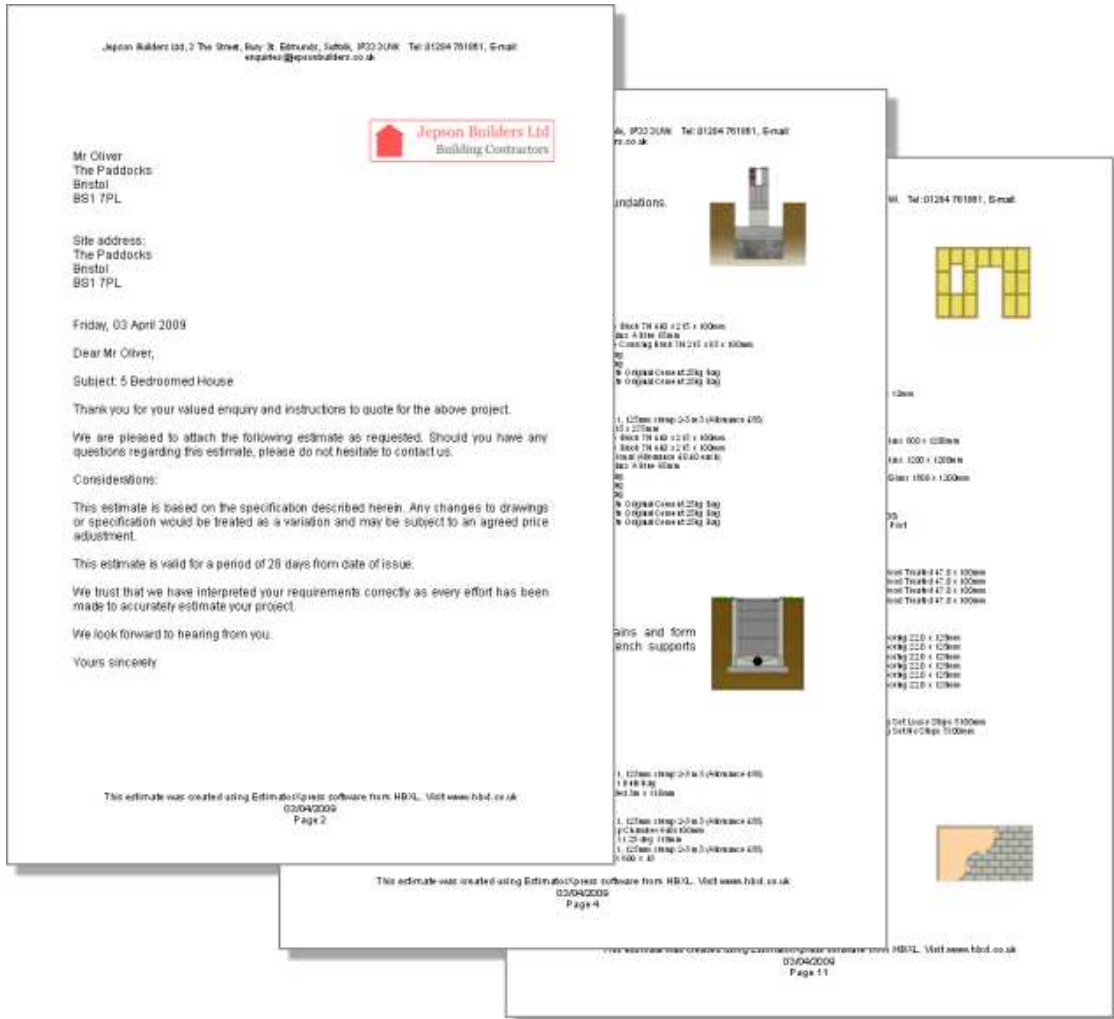
Bricklayer Carpenter Decorator Groundworker Insulation Installer Plasterer Roof Tiler Sundry Labour



# HBXL

# factsheet

The information generated by the system is very detailed and allows the user to break down a customer quote by Resource Type, Build Phase, Element, and/or Supplier.



For a full information pack, brochure and/or demonstration contact:

**Marc Brady**  
**HBXL Sales Manager**  
**Email: [marc.brady@hbxl.co.uk](mailto:marc.brady@hbxl.co.uk)**  
**Tel: 0117 916 7854**

7