

# YOUR GUIDE TO THE UK'S LEADING CONSTRUCTION SOFTWARE

## HIBXL

*your partner in success*

BUSINESS-BUILDING SOFTWARE

ESTIMATING | DESIGNS | HEALTH & SAFETY | LEGAL CONTRACTS | PROJECT MANAGEMENT

# HOW DO I MAKE MY PROJECTS RUN SMOOTHLY AND TO TIME AND BUDGET?

## PROJECT PLANNING FOR BUILDING FIRMS

ProjectXpert is aimed full square at building firms of all sizes. It's not just the big players who have to juggle multiple jobs. Maybe you have several extensions on the go at once? Maybe you do lots of small insurance jobs? Maybe you're managing a 10 house site? For any project or projects you want to manage more efficiently ProjectXpert puts you back in control.

Being tailor-made for the industry, ProjectXpert thinks the way you do. Simply list out the tasks, their likely durations when they start, when they'll finish and if anything has to finish before another phase can start. On top of which rather than simply listing costs like generic project management software would, it allows you to split the costs allocated to each phase into materials, labour and plant. It also has lots of functions specific to builders and will produce graphs and histograms to assist with cash flow management throughout the job.

## PERFECT COMBINATION

You can use ProjectXpert in tandem with EstimatorXpress allowing you to import your EstimatorXpress bar chart into it including all labour, material and plant costs. As you make amends on the job then export back to EstimatorXpress to reschedule all your deliveries and management reports.

## ULTIMATE EFFICIENCY FROM YOUR PROJECTS

You might think that your spreadsheet and word processing systems are man enough for your requirements, but are they as profitable as they could be? Imagine being able to merge all the jobs you have on the go and see whether you can better utilise your labour, how your material is being distributed, where your equipment is on any one day. And how helpful would it be to email from the software to colleagues, sub-contractors and clients? Or see the impact of changes on the program to completion? Read on!

**project Xpert**  
Keeping your projects on time and budget

**HBXL**

Compatible with Windows 7

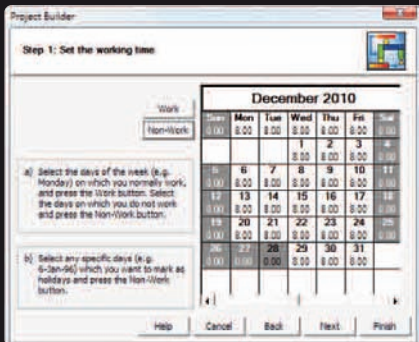
FEATURING **xconnex** DATA SHARING TECHNOLOGY

**EFFICIENCY FOR ALL TRADES**  
Suitable for all builders, contractors, subcontractors, company owners and project managers

**For a full rundown call Ian on 0845 1234 065**

**System requirements:**  
Windows® XP (SP2) / Windows® Vista / Windows® 7; Pentium P4 700GHz; 256MB Ram; 100MB Disk space; Internet Connection; SVGA monitor; Pointing Device; Printer & CD ROM drive.

# SO I CAN TRACK TASKS, FINANCES AND AMENDS?

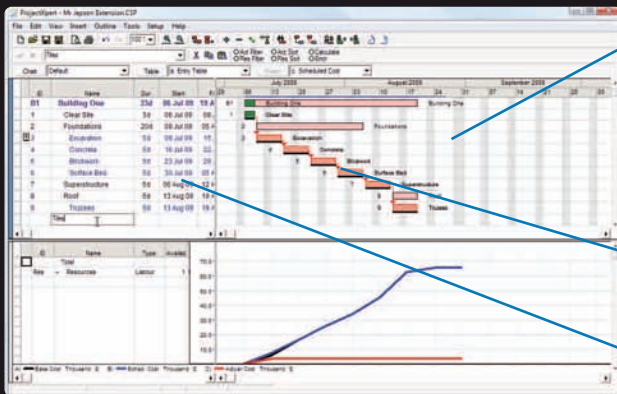
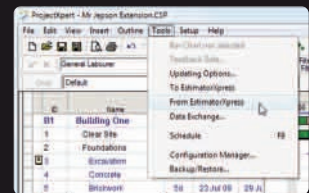


## STEP 1. SET UP YOUR PROJECT & CALENDAR

It's easy to create a new project using the Project Builder. Enter your project details quickly and simply, giving your project a title, start date and tell it your hours of work e.g. 8am-5pm / 24/7 call out service or when you can't get access to site.

## EVEN QUICKER STILL!

Links with EstimatorXpress v.8 (and upwards) so you can import your EstimatorXpress job into ProjectXpert and it will automatically create your build program in seconds! It also imports all your resource and cost information to make Step 3 a doddle!



ProjectXpert will build the chart as you go.

## STEP 2. CREATE TASKS

It's really quick! All you do is list the tasks that need to be carried out by entering them into the activity spreadsheet giving each a description, duration and start date.

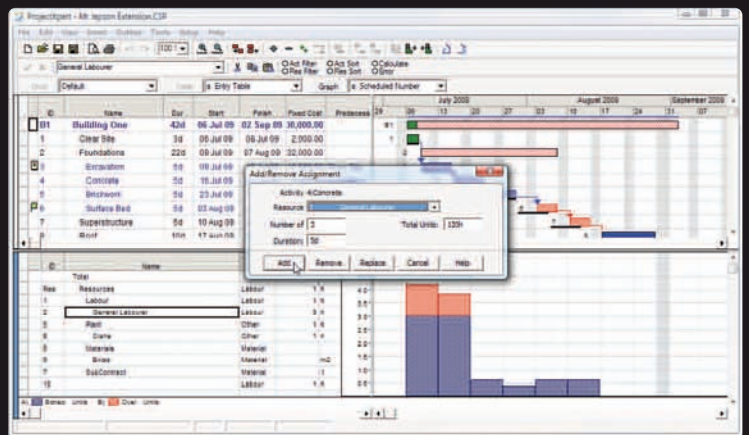
You can define the dependencies between the phases to build your Critical Path to define the order in which tasks must occur

Note you can have sub phases too to indicate that these need to be completed in order for the main Task to be completed.

## STEP 3. ASSIGN RESOURCES AND ESTIMATED COSTS

To use the software to the max, assign resources (such as materials, labour or plant) to each individual task and ProjectXpert will then give you charts to see where resources are over or under-allocated.

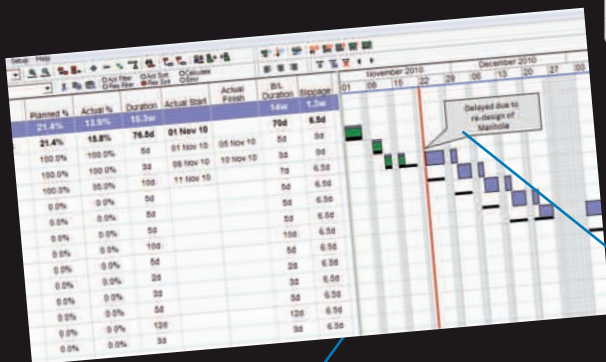
Happy with your build program? Store a baseline to provide you with a snap shot of what things should have been happening and when versus any changes later made to the program to show 'as built versus program'



## STEP 4. PRINT!

Keep everyone in the loop and improve communication between you and your contractors, your customers and not to mention the bank manager! Print multi-page/wall chart or copy to clipboard to be sent by email.

Text and graphic annotations can be placed anywhere on barchart/histogram.



Add payment dates to show the customer what they need to pay and when.

You can also export your reports in to Microsoft Excel and various accounting software packages for ultra flexibility!

**HAVE  
A CHAT ON  
0845 1234 065  
OR EXPLORE  
www.hbxi.co.uk**



# **HBXL**

***your partner in success***

**BUSINESS-BUILDING SOFTWARE**