



**contracts Xpert**



Plain English building contracts that keep you safe not sorry

HIBXL

**plans Xpress**



CAD drawing made seriously simple

Draw your own professional building plans easily!

HIBXL

**project Xpert**



Keeping your projects on time and budget

HIBXL

**health & safety Xpert**




Simple to use - hard to forget

Taking the pain out of Health & Safety paperwork

HIBXL

**estimator Xpress**



For builders, developers, self-builders and renovators.

Fast calculators cost and quantify the entire job, saving you hundreds of time!

Estimating and project management made seriously simple

HIBXL

AS RECOMMENDED BY SARAH BEENY FROM CHANNEL 4'S PROPERTY LADDER



# YOUR GUIDE TO THE UK'S LEADING CONSTRUCTION SOFTWARE

## HIBXL

your partner in success

BUSINESS-BUILDING SOFTWARE

ESTIMATING | DESIGNS | HEALTH & SAFETY | LEGAL CONTRACTS | PROJECT MANAGEMENT



# BUILD YOUR BUSINESS WITH THE HBXL SOFTWARE RANGE

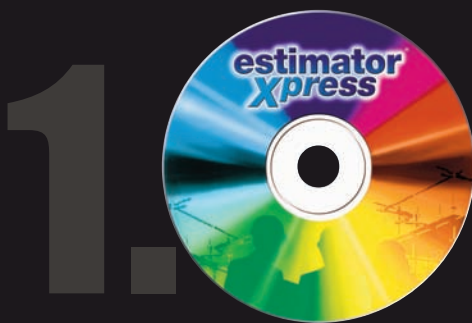
Our mission in life is to help your business work like clockwork, for you to be able to concentrate on the growth of your business, for you to feel safe, confident and professional about what you do and offer. For us it's a passion for the construction industry's success. We're not just giving you a CD with some clever calculators or drawing tools. We're giving you business solutions. And as an HBXL builder or tradesman you know you'll always be offered help, tips, updates and new products that keep you at the forefront... it's what we do!

## X-CONNEX™ SHARING DATA BETWEEN ALL YOUR HBXL SOFTWARE



Every stage of the building process is connected and all HBXL software is too! Since we're in the business of saving you time - we created some clever 'under the bonnet' technology that eliminates repetition. Just add your dimensions into PlansXpress or EstimatorXpress and watch X-connex share it with each other, then Health & Safety Xpert, ProjectXpert and ContractsXpert. Now that's time-saving.

## ESTIMATORXPRESS® ESTIMATING MADE SERIOUSLY SIMPLE



- Simply enter dimensions into onscreen drawings and let EstimatorXpress calculate the lot down to the last screw
- Professional estimates and smart business-winning quotes - every time
- Only software to truly link you to thousands of live material prices to keep your prices up-to-date
- Totally accurate, it doesn't miss a thing - calculating wastage, critical costs, profit and more

>> Turn to page 6

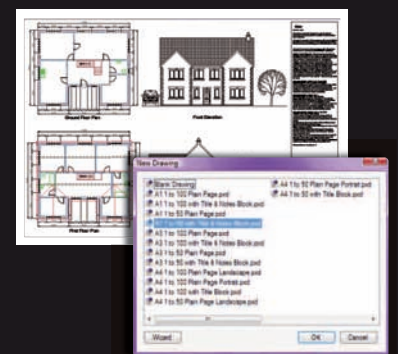


## PLANSXPRESS® DRAWS BUILDING PLANS QUICKLY AND EASILY



- First professional CAD software designed especially for general building
- Suitable for planning applications and building regulation submissions
- No drawing skills needed - it's just click, drag and drop
- Comes complete with construction symbols and drawing tools
- X-Connex links the software with EstimatorXpress to produce instant estimates & quotes from the design

>> Turn to page 10



## HEALTH & SAFETY XPERT® TAKES THE PAIN OUT OF HEALTH & SAFETY



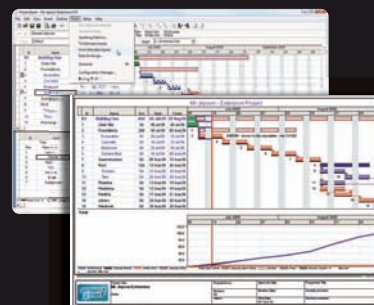
- Risk and COSHH Assessments, Method Statements, Policies, Site Inspections...
- Generates all your H & S paperwork to industry standard
- Suitable for CDM compliance and CHAS
- Guides you through each document and teaches you about the law
- Software updates keep you ahead of changing legislation - before it happens >> Turn to page 14



## PROJECTXPERT® KEEPS YOUR PROJECTS ON TIME AND BUDGET



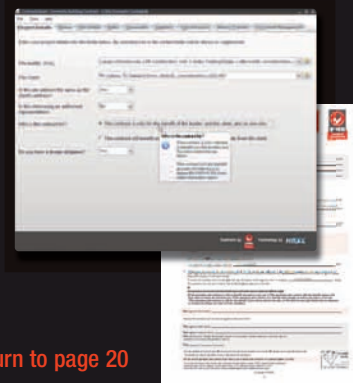
- Will make your business more efficient and more effective
- Ensures your projects run smoothly
- Easy to use and more flexible than other packages
- Tracks all tasks, resources, materials, finances and amends to the project
- Accurately plots build programs, resource charts and cash flow >> Turn to page 18



## CONTRACTSXPERT® STARTS EVERY JOB WITH A PROFESSIONAL CONTRACT



- Generates professional certified FMB building contracts written in simple, plain English
- Covers every type of domestic, commercial and industrial building project
- Lays out the terms and conditions of your payments to keep your projects running to schedule
- Contracts that inspire confidence, protecting you and your customer >> Turn to page 20



## WHAT COMES NEXT? RESEARCH AND DEVELOPMENT IS THE FUTURE



25% of our turnover goes straight back into the research and development that has helped HBXL pioneer the best software for builders in the 21st Century. The industry doesn't stand still and neither do we, so watch this space for the next innovation that will help you meet future challenges and build your business successfully...

**"User feedback is the number one priority for updates and development. We listen to you and build our software around what you want!"**

Jo Mulgrew,  
Marketing & Product  
Development Director



# A builder, a business and a passion for the industry...

"I was a builder for over 25 years and eventually became so fed up with spending all hours agonising over estimates that I decided to find an easier way - and that's essentially how HBXL began a decade ago. Now our 9000+ customers, the education sector partnerships, our associations with the Federation of Master Builders, Guild of Master Craftsmen and other trade organisations all suggest that it was just what the industry was waiting for.

Of course the business is much more than me now – we've advisors, demonstrators, a help team and an all-important Research & Development unit. But we have a shared passion. We're all in partnership with our customers. Everyone's working towards the same goal to improve the working processes within the industry to better every building firm's chances of success – whether you're IT savvy or not, a Groundworker or a Roofer, a one-man band or a Property Developer.

So what's so special about our software? As our strapline implies, each disk is a business-builder. Install EstimatorXpress and you'll win more business, you'll be more profitable, you'll get your life back. Start using PlansXpress and you'll have another profit stream, another weapon in your armoury to win over customers. Work with Health & Safety Xpert and everyone's in safe hands. ContractsXpert will help you sleep at night – and so will the all-new ProjectXpert.

This brochure can really only touch on the many benefits of our easy to use software. For more information give our team a call, visit the website or email me, one builder to another, at [Adrian@hbxl.co.uk](mailto:Adrian@hbxl.co.uk)

With best wishes

*Adrian Wild*

Adrian Wild  
Managing Director



**"Developing the X-connex technology to cut down the time builders spend in front of their computer has been particularly rewarding."**

Steven Mulgrew, Software Development Director



# Don't take our word for it... just two (of many) success stories say it all.



Lee Goodwin  
Oakleafe Property  
Services

## Now I'm competing with the big boys

Federation of Master Builders (FMB) regional council member Lee Goodwin, played for West Ham United FC until a severe knee injury cut short a promising career. Thanks to his dad's guidance and his own hard work, Lee knuckled down and concentrated on completing his apprenticeship.

Lee now operates Oakleafe Property Services Ltd, a specialist family run renovation company with his brother Dean and father John. The business has been running for 2.5 years and covers all of Essex. The main focus of the business is to provide a skilled renovation service.

Using EstimatorXpress, Oakleafe doubled their turnover in the first year. Lee believes that this is due to the time saved, and also the breakdown of the quotes resulting in more work being won – out of every 7 quotes he now wins 5.

Lee says 'On many occasions our EstimatorXpress estimate has influenced potential customers in our favour due to its professional and in-depth presentation. We are not always the cheapest either! But because we can demonstrate precisely where the money is being spent is has given us a huge advantage over competitors. It stops 'guesstimates' and has helped us improve our bottom line figures.

Lee recently quoted for a £190,000 conversion in 2 hours where as before it would have taken him 3-4 days. He can also produce a £20,000 job in less than 15 minutes.

Lee concludes: "We now use the whole suite of HBXL software products and the outlay in terms of investment in the software is minimal compared to how much business it has helped Oakleafe secure – our turnover is now 5 times our first return. Without HBXL we wouldn't be in the position we are today."

Read the full story at [www.hbxl.co.uk/leegoodwin](http://www.hbxl.co.uk/leegoodwin)



Nick Orchard  
England's Finest  
Property Services

## I've built my business using HBXL software

In 2009 Nick Orchard was voted **Britain's No.1 Tradesman by Trustmark** and has enjoyed amazing success in the short time he has been in business. He started using HBXL's software almost as soon as he set-up his property service. He signed up to a training day early on and says "once you've got the hang of it - it's a doddle."

Now that he's mastered the software Nick finds something like a **quote for £30,000 takes typically just an hour** to complete the quote from start to finish.

Nick's background was in heating and plumbing but **EstimatorXpress gave him the confidence to expand into general building.**

"My customers compliment me on my professional manner. I am quoting for jobs I wouldn't normally, winning the work and securing profit – thanks to HBXL software."

Watch Nick's video at [www.hbxl.co.uk/nickorchard](http://www.hbxl.co.uk/nickorchard)

**"Having come from the construction industry it's really great to have a hand in making a builder's life that much easier."**

Jim Pizzey, Technical Director



Find more builder case studies and video testimonials at [www.hbxl.co.uk/ourcustomers](http://www.hbxl.co.uk/ourcustomers)



# WHY IS ESTIMATORXPRESS THE BEST AROUND?

## ON AVERAGE USERS WIN 230% MORE BUSINESS!

Team up with EstimatorXpress, the industry standard for estimating software and let us help you win more business. It's proven to improve your win rate! We've created a system that will estimate any building job of any size and give you the tools to know exactly where your money is going and how much profit you're going to make.

## SAVE TIME - IN FACT SAVE 67 DAYS EVERY YEAR!

EstimatorXpress is actually saving builders over 468 hours each year on estimating, typing quotes, keeping prices up-to-date and scheduling material orders. That equates to a staggering 67 days worth of time-saving each year thanks to speedy calculators, instant quotes and immediate reports! Not bad eh?!



Soon you'll be racing through your estimating - just 5 minutes for a roof.



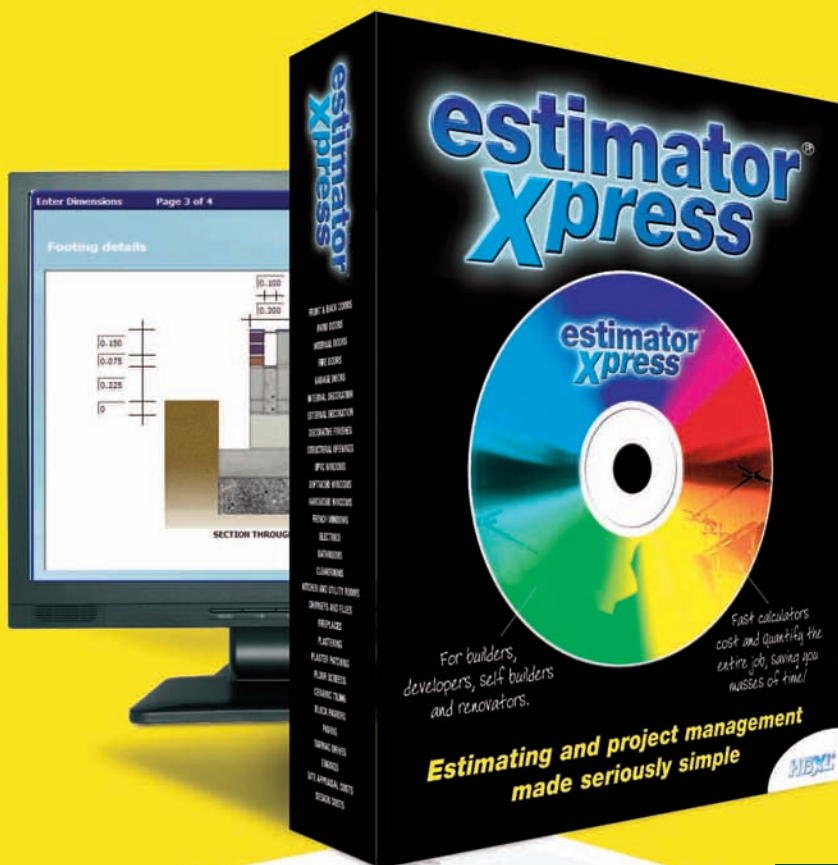
In just one hour a house can be estimated and you're back on site.

## FOR BUILDERS, SUBBIES & SPECIALIST TRADES

It couldn't be easier with simple onscreen drawings to input dimensions. And unlike other software products, we provide you with all you need in one package for everything from extensions and new builds to lofts, renovations and small jobs. And if you are a specialist tradesman or contractor you can choose from our Trade editions. It costs the lot with 100% accuracy - all your materials, labour, plant and subbies - giving you a professional quote and a well-earned profit.

## KEEPS PRICES ACCURATE & UP-TO-DATE

Unlike other systems you don't need to spend ages keeping prices up-to-date. Only with EstimatorXpress can you choose to link to tens of thousands of live material prices from our selection of builder merchant partners. Alternatively we give you thousands of live prices with the HBXL Price Tracker database, or if you really want to you can choose to key in your own prices and keep them current - the choice is yours!



### NEW TRADE EDITIONS

You can now get EstimatorXpress editions for Builders, Plumbers, Roofers, Decorators, Groundworkers, Plasterers and Brickwork Contractors



Commended for Best Connected IT



Winner 2009

**Need to chat? Call Marc on 0845 1234 065**



System requirements:  
1.5 Ghz processor, 500MB Hard Disk Space, 512MB RAM, Microsoft Excel® & Word® 2000SR1/XP/2003/XP/2007/2010, Microsoft Windows® 98/ME/NT/ 2000/XP/Vista/7, Internet Connection, SVGA Monitor, Pointing Device.



# HOW DOES IT WORK AND WHERE DOES IT GET ITS PRICES FROM?



## CONNECT TO LATEST PRICES 24/7

Unique to EstimatorXpress - Price Tracker™ and a link to one of our many merchant partners puts latest materials costs at your fingertips - accurately and instantly!

EstimatorXpress comes shipped with over 1000 resources covering materials, labour and plant, so you don't have to build up a Price Book from scratch. Our exclusive Price Tracker internet technology links you to real world material rates to keep your estimates up-to-date.

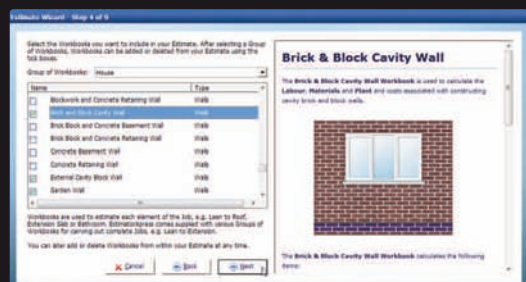
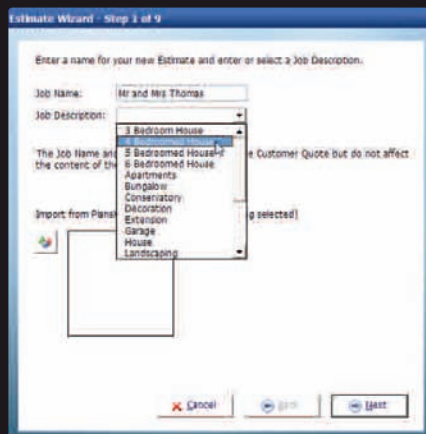
Opt to link to an online catalogue from one of our leading builders merchant partners (exclusive to EstimatorXpress) and get access to 100,000s of extra products at trade prices - and add your own suppliers too!

## STEP 1. CHOOSE YOUR JOB

Use the Estimate Wizard to create each new estimate in 9 easy steps.

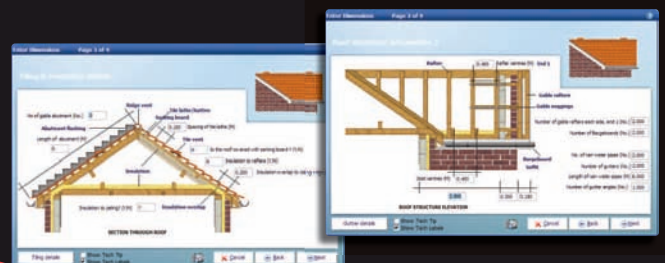
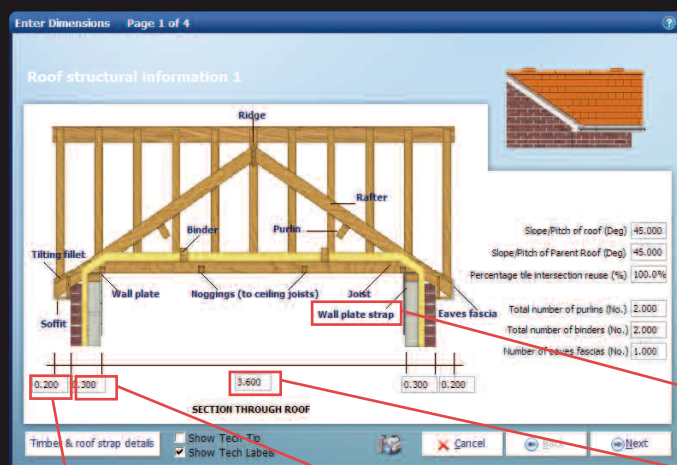
## EVEN QUICKER!

Import a set of plans from PlansXpress and watch the software price up the whole job automatically!



## STEP 2. TYPE IN DIMENSIONS

Enter dimensions into pictures of what you are building. No guesswork. Nothing's missed. Nothing is overlooked. Unlike other broad brush systems, it has calculated the lot in detail - materials, labour and plant!



Simply click on the drawing to enter your dimensions.

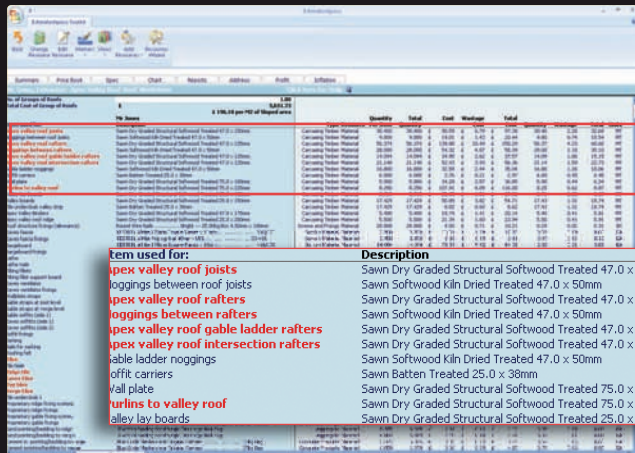
Many dimensions are pre-entered for you to speed up pricing the work.

Easily edit any that differ from your plans - virtually no typing required!

If you're unsure of any variables there's help on screen.

# JUST HOW MUCH OF THE WORK DOES ESTIMATORXPRESS DO FOR ME?

Estimating is just so straightforward with EstimatorXpress. Having entered your dimensions into easy to understand pictures of what you are building – now look at how much it's done for you!



## STEP 3. CONFIRM RESOURCES

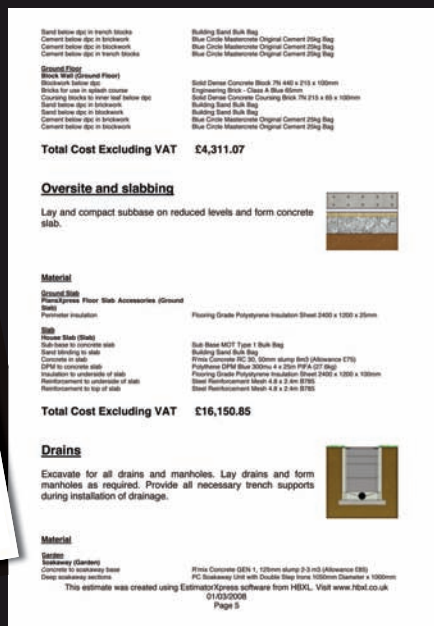
You won't find any other software with the flexibility of EstimatorXpress! Confirm the resources you commonly use and amend any material, labour or plant costs to ensure total accuracy. The software then remembers the way you work. See the unit cost, the estimate rate, quantities and wastage. You can change any of these resources in the specification at any time!

Item used for:	Description	Type	Resource	Per Item	Quantity	Cost	Cost
Apex valley roof joists	Sawn Dry Graded Structural Softwood Treated 47.0 x 150mm	Carcasing Timber	Material	30.400	30.400	£ 90.59	£ 97.35
Loggins between roof joists	Sawn Softwood Kiln Dried Treated 47.0 x 50mm	Carcasing Timber	Material	9.800	9.800	£ 19.01	£ 1.43
Apex valley roof rafters	Sawn Dry Graded Structural Softwood Treated 47.0 x 125mm	Carcasing Timber	Material	56.374	56.374	£ 139.80	£ 10.49
Loggins between rafters	Sawn Softwood Kiln Dried Treated 47.0 x 50mm	Carcasing Timber	Material	28.000	28.000	£ 54.32	£ 4.07
Apex valley roof gable ladder rafters	Sawn Dry Graded Structural Softwood Treated 47.0 x 125mm	Carcasing Timber	Material	14.094	14.094	£ 34.95	£ 2.62
Apex valley roof intersection rafters	Sawn Dry Graded Structural Softwood Treated 47.0 x 125mm	Carcasing Timber	Material	21.140	21.140	£ 52.43	£ 3.93
Gable ladder loggins	Sawn Softwood Kiln Dried Treated 47.0 x 50mm	Carcasing Timber	Material	16.800	16.800	£ 32.59	£ 2.44
Offit carriers	Sawn Batten Treated 25.0 x 38mm	Carcasing Timber	Material	6.000	6.000	£ 2.76	£ 0.21
Vall plate	Sawn Dry Graded Structural Softwood Treated 75.0 x 100mm	Carcasing Timber	Material	5.900	5.900	£ 34.28	£ 2.57
Purlins to valley roof	Sawn Dry Graded Structural Softwood Treated 75.0 x 225mm	Carcasing Timber	Material	8.250	8.250	£ 107.91	£ 8.09
Valley lay boards	Sawn Dry Graded Structural Softwood Treated 25.0 x 150mm	Carcasing Timber	Material	8.715	8.715	£ 26.45	£ 1.91

You can throw your calculator in the bin! It's automatically scheduled all the materials, labour and plant for the job in an instant!

And it's automatically produced a complete cutting list from your joists and rafters to your tile nails too!

Gable ladder loggins	M	28 @ 0.6	16.80	Sawn Softwood Kiln Dried Treated 47.0 x 50mm
Offit carriers	M	20 @ 0.3	6.00	Sawn Batten Treated 25.0 x 38mm
Vall plate	M	2 @ 2.95	5.90	Sawn Dry Graded Structural Softwood Treated 75.0 x 100mm
Purlins to valley roof	M	2 @ 4.125	8.25	Sawn Dry Graded Structural Softwood Treated 75.0 x 225mm
Valley lay boards	M	2 @ 4.357	8.71	Sawn Dry Graded Structural Softwood Treated 25.0 x 150mm
Tile underdoak valley strip	M	4 @ 4.357	17.43	Sawn Dry Graded Structural Softwood Treated 25.0 x 150mm
Apex Valley Binders	M	2 @ 2.7	5.40	Sawn Dry Graded Structural Softwood Treated 47.0 x 175mm



## STEP 4. PRESS PRINT!

EstimatorXpress automatically writes up an impressive quote in Microsoft® Word - without you having to type a thing!

Show as much or as little detail as you want with an option to put images on the quote.

## WHAT ELSE CAN IT DO?

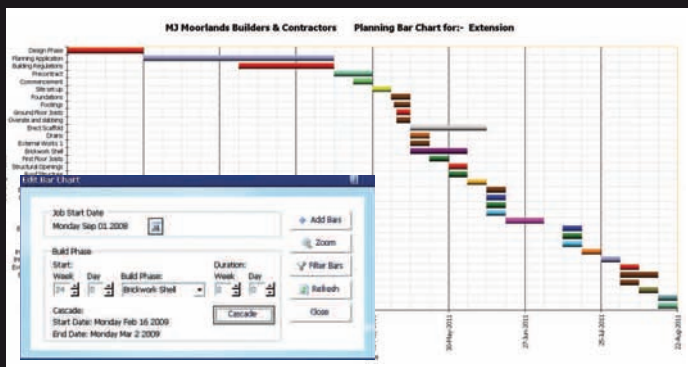
Hundreds of built-in calculators for different jobs mean you have the flexibility to estimate any domestic project from hanging a door to building a plot of houses! From foundations and footings, to the final lick of paint, EstimatorXpress will cost the lot – guiding you through every single phase of the job.





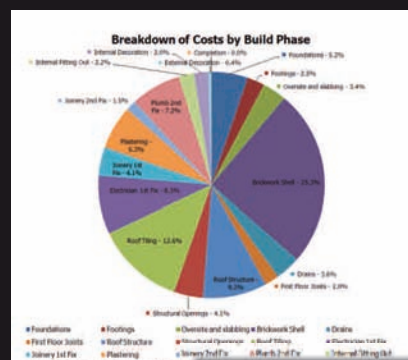
# HOW DOES ESTIMATORXPRESS GIVE ME THE EDGE AND WIN ME THE WORK?

EstimatorXpress comes with over 50 automated reports including quotes, costings, schedules, profit forecasts and cash flow...



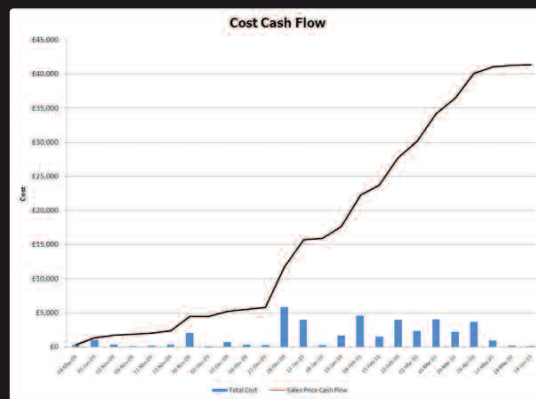
## BUILD PROGRAM

Get organised. Easily produce professional, full colour build programs with EstimatorXpress to ensure contractors are on site, on time, as well as impressing clients and the bank! Update your build program and all your reports will automatically be updated without you having to retype a thing!



## COSTINGS

Detailed cost breakdowns show your costs precisely, so you know how they are incurred, helping you stick to budget!



## CASH FLOW CHART

As you know, cash flow is king and critical to the success of any building business. Our cash flow reports allow you to control your finances and bank balance.

**SAMPLE BASIC COST SUMMARY FOR MR AND MRS BROWN**  
Created using EstimatorXpress®

Build Phase	Resource	Item Costs	Wastage Costs	Total Costs
Brickwork Shell	Labour	£1,823.99	£0.00	£1,823.99
	Material	£3,717.87	£295.39	£4,013.26
<b>Brickwork Shell Total</b>		<b>£5,541.86</b>	<b>£295.39</b>	<b>£5,837.25</b>
Completion	Labour	£17.00	£0.00	£17.00
<b>Completion Total</b>		<b>£17.00</b>	<b>£0.00</b>	<b>£17.00</b>
External Decoration	Labour	£134.99	£0.00	£134.99
	Material	£30.81	£3.08	£33.89
<b>External Decoration Total</b>		<b>£165.80</b>	<b>£3.08</b>	<b>£168.88</b>
Footings	Labour	£229.93	£0.00	£229.93
	Material	£371.04	£27.10	£408.14
<b>Footings Total</b>		<b>£601.08</b>	<b>£27.10</b>	<b>£628.18</b>
Foundations	Labour	£540.74	£0.00	£540.74
	Material	£231.30	£23.13	£254.43
<b>Foundations Total</b>		<b>£772.04</b>	<b>£23.13</b>	<b>£795.17</b>
Internal Decoration	Labour	£267.31	£0.00	£267.31
	Material	£55.38	£5.59	£60.97
<b>Internal Decoration Total</b>		<b>£322.69</b>	<b>£5.59</b>	<b>£328.28</b>
Joinery 1st Fix	Labour	£241.23	£0.00	£241.23
	Material	£55.10	£5.51	£60.61
<b>Joinery 1st Fix Total</b>		<b>£296.33</b>	<b>£5.51</b>	<b>£301.84</b>
Joinery 2nd Fix	Labour	£196.50	£0.00	£196.50
	Material	£540.84	£40.62	£581.46
<b>Joinery 2nd Fix Total</b>		<b>£737.34</b>	<b>£40.62</b>	<b>£777.96</b>
<b>Foundations and masonry</b>	Labour	£145.75	£0.00	£145.75

Due Date	Profit (£K)	Cumulative Profit
17-Nov-09	£	£
24-Nov-09	£ 85.40	£ 85.40
01-Dec-09	£ 862.20	£ 947.60
08-Dec-09	£ 329.54	£ 1,277.14
15-Dec-09	£ 361.79	£ 1,638.93
22-Dec-09	£ 307.86	£ 1,946.79
29-Dec-09	£ 2.06	£ 1,948.85
05-Jan-10	£ 4,346.99	£ 6,295.84
12-Jan-10	£ 0.20	£ 6,296.04
19-Jan-10	£ 623.89	£ 6,919.93
26-Jan-10	£ 665.12	£ 7,585.05
02-Feb-10	£ 3,729.96	£ 11,315.01
09-Feb-10	£ 2,144.14	£ 13,459.15
16-Feb-10	£	£ 13,459.15
23-Feb-10	£ 628.57	£ 14,087.72
01-Mar-10	£ 1,861.93	£ 15,949.65
08-Mar-10	£ 1,498.89	£ 17,448.54
15-Mar-10	£ 520.99	£ 17,969.53
22-Mar-10	£ 778.62	£ 18,748.15
29-Mar-10	£ 3,729.96	£ 22,478.11
05-Apr-10	£ 8,861.80	£ 31,339.91
12-Apr-10	£ 3,172.81	£ 34,512.72
19-Apr-10	£ 628.57	£ 35,141.29
26-Apr-10	£ 3,339.46	£ 38,480.75
03-May-10	£ 2,413.96	£ 40,894.71
10-May-10	£ 36.08	£ 40,930.79
17-May-10	£	£ 40,930.79
24-May-10	£ 284.41	£ 41,215.20
31-May-10	£ 4.45	£ 41,219.65
<b>Total Profit</b>	<b>£ 46,452.15</b>	

## PROFIT CHART

Profit analysis so you can see how much money you'll make on the job or project before you start!

**SAMPLE MATERIALS SCHEDULE FOR MR AND MRS BROWN**  
Created using EstimatorXpress®

Build Phase	Type	Description	Item used for	Item Qty	Wastage	Total Qty
Brickwork Shell	Approvals	Building Sand Bulk Bag	Sand for use in brickwork	£18.56	£1.86	£20.42
			Sand for use in brickwork	£20.42	£2.00	£22.42
Blocks		Insulation Block Standard 400 x 215 x 100mm	Blocks above first floor level	£39.23	£38.92	£78.15
		Insulation Concrete Block 750 x 100mm	Insulation above first floor level	£0.72	£0.07	£0.79
Bricks		Facing Bricks - Traditional (Reference 01 00 00)	Bricks above first floor level	£644.45	£644.44	£1,288.89
		Common Bricks	Bricks above first floor level	£644.45	£644.44	£1,288.89
Bedwork timbers		150mm x 150mm Architectural Stone Gilt	Architectural stone	£45.00	£45.00	£90.00
		150mm x 150mm Architectural Stone Tapered	Architectural stone	£45.00	£45.00	£90.00
Carencing Timber		150mm x 150mm Architectural Stone Tapered	Architectural stone	£45.00	£45.00	£90.00
		150mm x 150mm Architectural Stone Tapered	Architectural stone	£45.00	£45.00	£90.00
Concrete Products		Slabs	Concrete slabs	£11.15	£1.03	£12.18
		Concrete	Concrete	£11.15	£1.03	£12.18
Doors		REINFORCER Reinforced Fibreglass Doors 1800	Door frame	£20.00	£21.00	£41.00
		REINFORCER Reinforced Fibreglass Doors 1800	Door frame	£20.00	£21.00	£41.00
Foundations		150mm x 150mm Architectural Stone Tapered	Architectural stone	£45.00	£45.00	£90.00
		150mm x 150mm Architectural Stone Tapered	Architectural stone	£45.00	£45.00	£90.00
Insulation		Insulation Concrete Block 750 x 100mm	Insulation above first floor level	£0.72	£0.07	£0.79
		Insulation Concrete Block 750 x 100mm	Insulation above first floor level	£0.72	£0.07	£0.79
Lime		150mm x 150mm Architectural Stone Tapered	Architectural stone	£45.00	£45.00	£90.00
		150mm x 150mm Architectural Stone Tapered	Architectural stone	£45.00	£45.00	£90.00
Materials		150mm x 150mm Architectural Stone Tapered	Architectural stone	£45.00	£45.00	£90.00
		150mm x 150mm Architectural Stone Tapered	Architectural stone	£45.00	£45.00	£90.00
Roofing timbers		150mm x 150mm Architectural Stone Tapered	Architectural stone	£45.00	£45.00	£90.00
		150mm x 150mm Architectural Stone Tapered	Architectural stone	£45.00	£45.00	£90.00
Windows and Door Hardware		150mm x 150mm Architectural Stone Tapered	Architectural stone	£45.00	£45.00	£90.00
		150mm x 150mm Architectural Stone Tapered	Architectural stone	£45.00	£45.00	£90.00
External Decoration		150mm x 150mm Architectural Stone Tapered	Architectural stone	£45.00	£45.00	£90.00
		150mm x 150mm Architectural Stone Tapered	Architectural stone	£45.00	£45.00	£90.00

## MATERIAL & LABOUR SCHEDULES

They say that time is money. Use the automatically produced 'Just in Time' Material and Labour schedules to ensure you've got what you need on site, when you need it, to avoid costly delays to construction.

# HOW DO I DRAW PROPER ARCHITECT-QUALITY BUILDING PLANS?

## IT'S EASY AND YOU HAVE REAL CONTROL

Designed especially for general building works, PlansXpress is really straightforward to use helping you quickly and easily draw professional building plans and elevations! And we do mean easily! You don't need a degree in CAD software to start drawing!

## SAVE FEES & WIN MORE WORK

When competing with other builders for a job, PlansXpress can give you something extra to tip it in your favour. You'll be drawing your own architect quality plans to show off to customers AND submit for planning applications in no time at all. You can also produce building regulation compliant working drawings including sections and notes. Think of it! No more costly outsourcing. Maybe you can charge for them too?!

## FOR HOME EXTENSIONS, LOFTS & NEW BUILD - PLUS RENOVATION INTERNAL LAYOUTS

PlansXpress is not just for new build. You can draft plans for extensions, loft conversions and renovation work or simply placing services and plumbing, electrics or room layouts. Not to mention external works.

## CAD SOFTWARE WITH A DIFFERENCE

The brainchild of a builder and engineer, PlansXpress is CAD software with a difference. Uniquely you can link PlansXpress with EstimatorXpress, which will read all the dimensions and items on your plans and turn them into an instant estimate and quote - now that's X-Connex technology!

**CAD FOR ALL TRADES**  
PlansXpress can be used for all types of trades. Design houses, extensions, renovations, roofs, lofts, dormers or use to show room layouts, services and more.

**IT SHOWCASE AWARDS 2008**  
Commended for Best Connected IT

**interbus Awards & Showcase**  
**WINNER BEST IT PRODUCT FOR SMES**

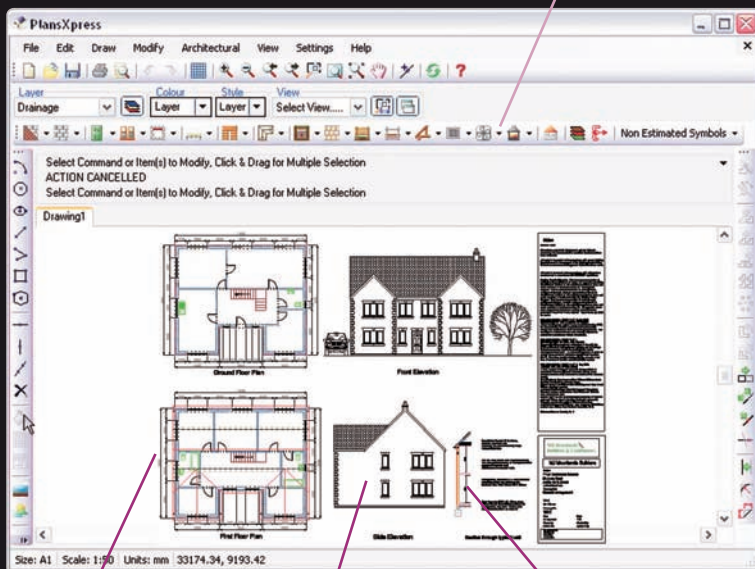
**For the full picture call Matt on 0845 1234 065**

**System requirements:**  
1.5Ghz processor, 250MB Hard Disk Space, 512MB RAM, Microsoft Windows® 2000/XP/Vista/7  
Internet Connection, SVGA Monitor, 3 button mouse with scroll wheel.



# WHAT IS IT THAT MAKES PLANSXPRESS SO EASY?

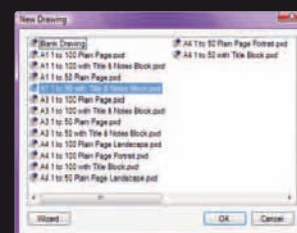
Drawing your plans with PlansXpress is easy! The wealth of construction drawing tools and architectural symbols it comes with out of the box means YOU can start drawing architect-quality drawings yourself.



Get the job started in two easy steps:

## STEP 1. CHOOSE A TEMPLATE

Pick your template and scale to quickly set up your drawing and paper size.



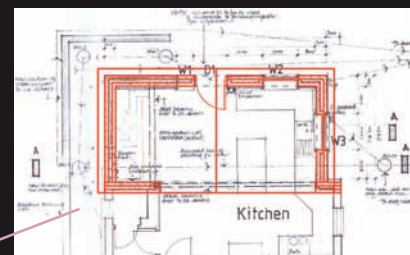
## STEP 2. ENSURE ACCURACY

We give you construction lines to use as your guide to make sure your drawings are totally accurate.



**GENERAL NOTES**  
No building works to be commenced until full planning permission has been granted or permitted development has been confirmed.  
All works to be carried out in accordance with current Building Regulations and to the approval of the Building Control Officer. No work to commence until approval of plans has been made.  
All works to be carried out in accordance with safe working practices and in accordance with CDM 2007 regulations.  
**EXISTING SERVICES**  
Existing Electrical Supplies: Prior to commencement of all building works, positions of all cables and apparatus should be identified and marked on site, recorded on plans and made available in the health and safety file.  
Existing Gas Supplies: Prior to commencement of all building works, positions of all pipes, conduits and apparatus should be identified and marked on site, recorded on plans and made available in the health and safety file.  
Existing Water Supplies: Prior to commencement of all building works, positions of all pipes, conduits and apparatus should be identified and marked on site, recorded on plans and made available in the health and safety file.  
Existing Telecoms and Cabling: Prior to commencement of all building works, positions of all pipes, conduits and apparatus should be identified and marked on site, recorded on plans and made available in the health and safety file.

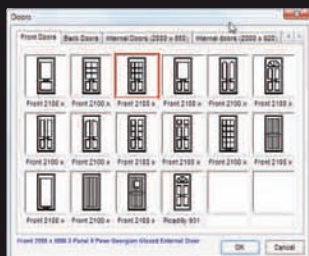
...and now you're ready to produce architect-quality plans for planning application and building regulation submissions.



Just one click to add dimensions to your plans.

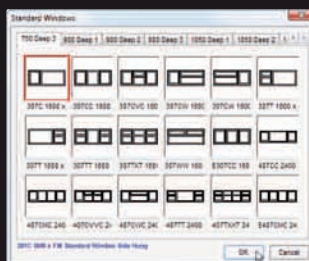
Automatically produces 2D elevations from your plans!

Position your detailed section from our comprehensive library.



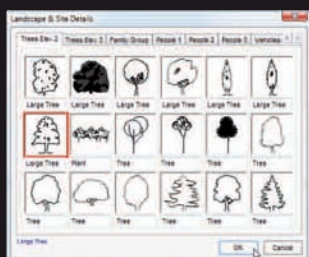
## A BIG SYMBOL LIBRARY

Helps you add doors and windows, stairs, electrics, plumbing, drainage, kitchens, bathrooms, furniture and landscaping etc.



## NOTES LIBRARY

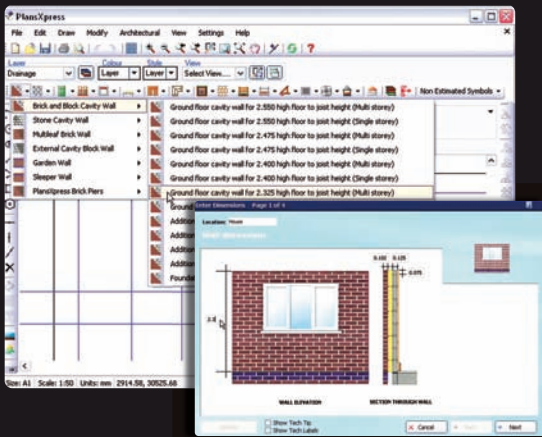
It comes with a library of notes to add to your drawings. Better still, combine with EstimatorXpress to automatically generate notes for the specific drawing.



The PlansXpress ScanPack enables you to price up work from existing plans. Simply scan a set of existing plans into PlansXpress (or import a file from AutoCad) and use the ScanPack drawing tools to trace over the original drawing. You'll then be able to fully estimate the design, produce elevations and 3D visualisations or add an extension, loft or renovation.

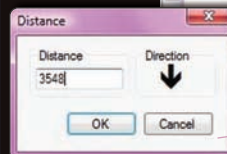
# HOW DO I DRAW UP MY PLANS AND ELEVATIONS?

You don't need drawing skills - it's all click, click, drag and drop and your walls just snap into place. It's easy to learn! What's more it's just another click to add dimensions!

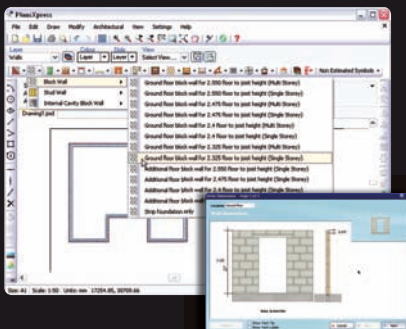
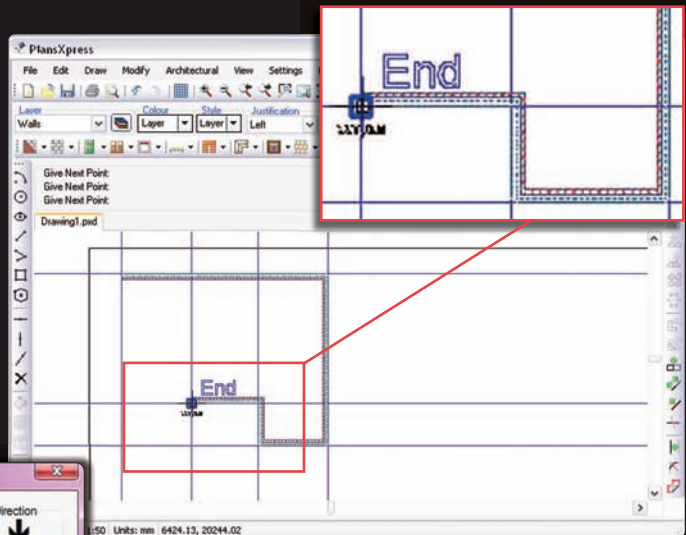


## EXTERIOR WALLS

Select your cavity wall from the menu, it prompts you to confirm some dimensions, then place your walls on the drawing.

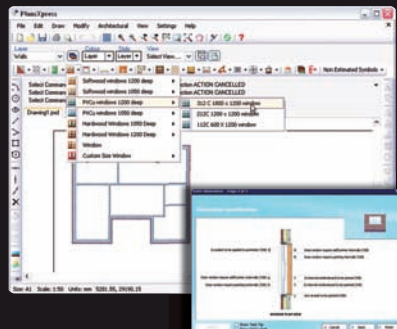


If you prefer to use the keyboard you can draw walls with the arrow keys. Just enter the distance and click OK!



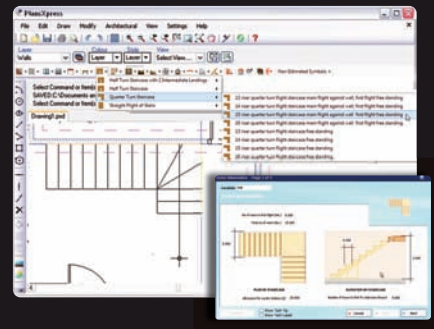
## INTERIOR WALLS

Internal walls are just as simple as drawing the external walls! Choose from the large range then place on the drawing!



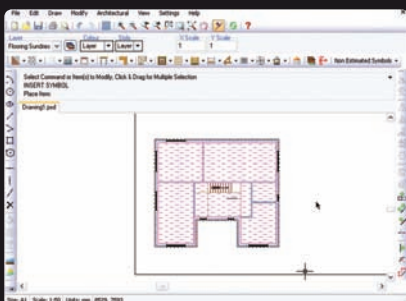
## WINDOWS & DOORS

Choose your windows and doors from the comprehensive library and place them on your walls. The software automatically slots them in.



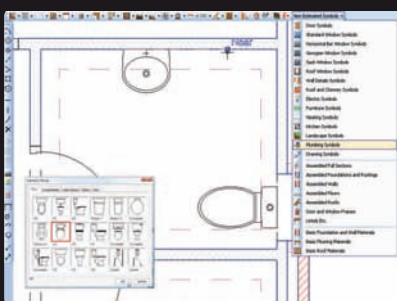
## STAIRS

Adding stairs couldn't be easier. Choose a pre-designed staircase from the menu and place on your plan in seconds.



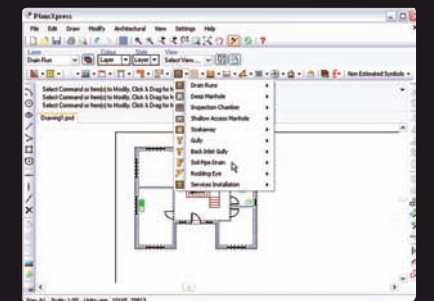
## FLOORS & SLABS

Select the type of floor from the menu and click around the corners of your walls to automatically draw the floors.



## PLUMBING & ELECTRICS

Add your plumbing and heating symbols from the extensive library as well as electrics, landscaping, furniture etc.

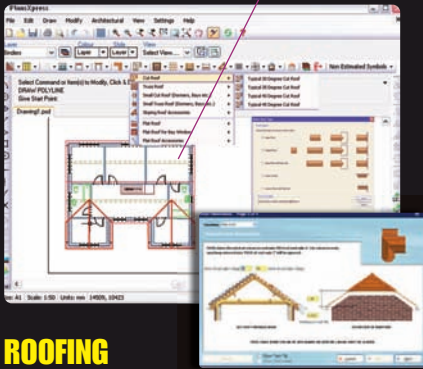


## DRAINAGE

You can also set out the drainage in no time... soil pipes, inspection chambers, manholes, drain runs and more.



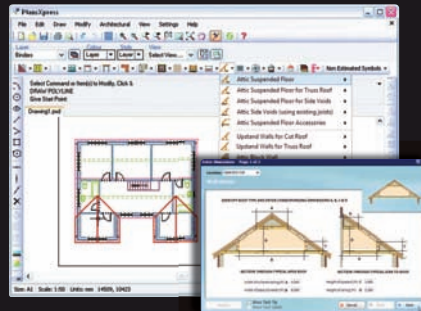
See how neatly the valley roof tees into the main roof.  
You can even add purlins, binders and drain pipes...



## ROOFING

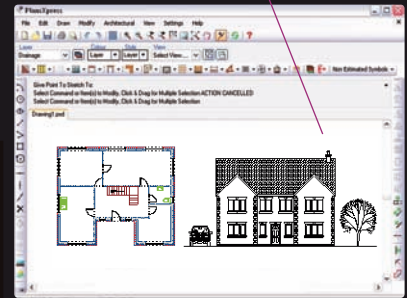
Select your roof from the menu and quickly customise. Choose from gable, hip, lean to's, valley or flat roofs then click around the external supporting walls to place it.

Add paths, patios, driveways, fencing and landscaping to create more realism to the drawing.



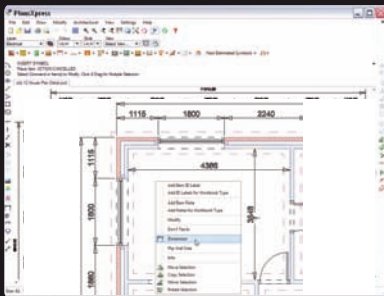
## LOFTS & RENOVATIONS

Designing loft conversions, dormers and renovation work is simple too. Choose the relevant design tool, click onto the drawing and confirm details.



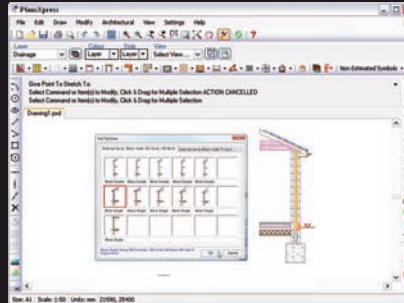
## ADD ELEVATIONS

Plans drawn, PlansXpress will amaze you with the professional elevations it produces without you having to draw a thing!



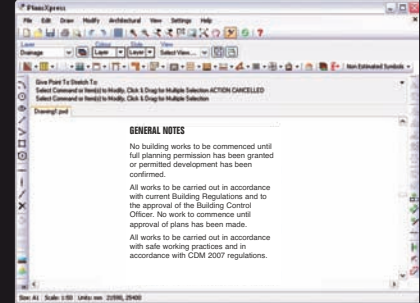
## CLICK TO SHOW DIMENSIONS

Before printing, you can add dimensions with just one click!



## ADD SECTIONS

No need to draw your own! Just add sections from the library.

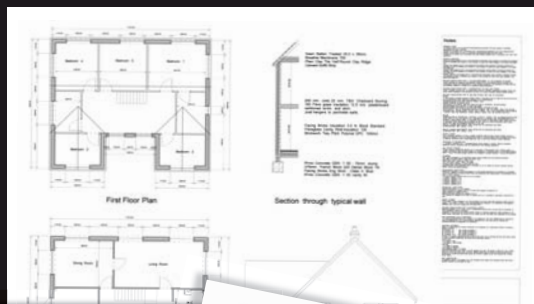


## ADD YOUR NOTES

You can insert technical notes from the library - even better - with EstimatorXpress it will write these for you!

## ...AND FINALLY PRINT

Print your working drawings in plan format or scale down for your office or home printer.



Just a click to turn your 2D plans into 3D visuals



Get excellent 3D rendering when you export to Google SketchUp - absolutely free of charge. Download Google SketchUp for free at <http://sketchup.google.com>

# HOW CAN I TAKE THE PAIN OUT OF HEALTH & SAFETY?

## THE LAW APPLIES TO EVERYONE

All building firms, no matter how small, have a duty of care to their employees and the general public. As far as reasonably possible, you must safeguard the health, safety and welfare at work of all on your site. **That's the law.**

With Health & Safety Xpert, you don't need to be a health and safety expert yourself as its built-in knowledge base determines the likely tasks and risks involved on site. It also comes with a handy guide (in plain English of course) detailing the regulations and documents you need to produce. **The HSE says if it's not written down, you can't prove that you're doing it.**

## WORK TO INDUSTRY STANDARDS

Non-compliance with the law can mean massive fines, site shut downs or even prison sentences. Health & Safety Xpert makes sure you have all the right paperwork and gives

you the peace of mind that you are complying with the latest regs.

These days customers and main contractors also want to see evidence of your health and safety standards so make sure you don't miss out on work by not having your paperwork in place.

## WE DO THE HARD WORK FOR YOU

It's just so easy, cutting down the time it would normally take by hand and at a fraction of the cost of a health and safety consultant. And MASSIVELY cheaper than an HSE fine! Plus, if you have EstimatorXpress it'll take information straight from your EstimatorXpress job! Added to which, you're linked-up to the very latest regulations through 'HBXL Support & Updates' keeping you up-to-date with legislations – so you need never worry again!



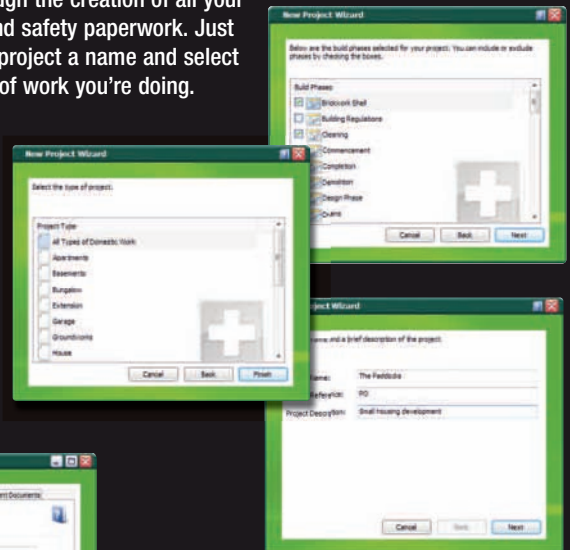
# JUST HOW MUCH OF THE WORK DOES IT DO FOR ME?

Producing your health and safety paperwork is just so easy, dramatically cutting down the time it would normally take by hand! Simply tell Health & Safety Xpert what you are building and it does the rest!



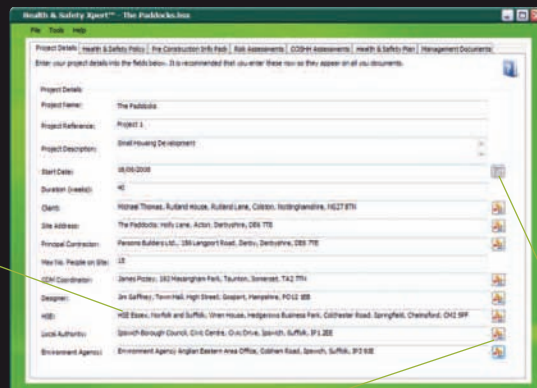
## STEP 1. SELECT THE JOB

The New Project Wizard will guide you through the creation of all your health and safety paperwork. Just give the project a name and select the type of work you're doing.



## EVEN QUICKER!

Import your EstimatorXpress job into Health & Safety Xpert and it will automatically author all the relevant paperwork in seconds!



Comes populated with HSE, Local Authority, and Environment agency addresses...so you don't have to start from scratch!

## STEP 2. GIVE THE DETAILS

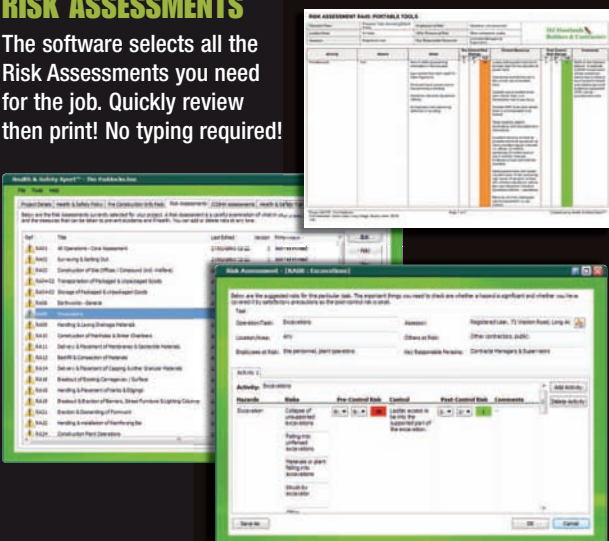
Confirm a few details about the project such as your client, the site address and how many people will be on site and you're ready to review all your documents.

Built-in calendar

Built-in address book which can synchronise with Microsoft Outlook™

## RISK ASSESSMENTS

The software selects all the Risk Assessments you need for the job. Quickly review then print! No typing required!



## COSHH ASSESSMENTS

Health & Safety Xpert also recommends all the COSHH Assessments you need for the hazardous substances on your building site!



# WHAT ELSE CAN HEALTH & SAFETY XPERT DO?

All building projects, no matter how small, need to comply with Parts 1, 2, 4 and 5 of the Construction, Design and Management Regulations 2007 (or CDM regs). This covers your duties as a building firm and the physical safeguards you must have in place. Health & Safety Xpert helps you document all this. It is also likely (under Part 3 of CDM) that your building project will require both a Pre-construction Info Pack and a Construction Phase Health and Safety Plan.

## COMPANY POLICY

Health & Safety Xpert also produces a comprehensive health and safety policy for your company – with no typing required! Just click print. This critical document defines your company's approach to health & safety, who does what and how they do it. **You need one now! It's the law - Health & Safety at Work Act 1974.**

## PRE-CONSTRUCTION INFO PACK

This **essential** document should be prepared so that main contractors are fully aware of the project's health, safety and welfare requirements. This is particularly important for property developers who ask contractors to tender for work **under the CDM regs.**

## CONSTRUCTION PHASE PLAN

The plan sets out your arrangements for ensuring the health & safety of everyone on site for each individual project. Health & Safety Xpert helps you produce this important document in minutes, providing you with guidance notes for you to enter site specific details. Review then print.

## F10 FORM

Under CDM 2007, if the construction phase involves more than 30 working days or 500 person days and the project is not of a domestic nature, the CDM Coordinator **must advise the HSE of your project on an F10 Form. It's the law under CDM regs.**





# HOW DO I MAKE MY PROJECTS RUN SMOOTHLY AND TO TIME AND BUDGET?

## PROJECT PLANNING FOR BUILDING FIRMS

ProjectXpert is aimed full square at building firms of all sizes. It's not just the big players who have to juggle multiple jobs. Maybe you have several extensions on the go at once? Maybe you do lots of small insurance jobs? Maybe you're managing a 10 house site? For any project or projects you want to manage more efficiently ProjectXpert puts you back in control.

Being tailor-made for the industry, ProjectXpert thinks the way you do. Simply list out the tasks, their likely durations when they start, when they'll finish and if anything has to finish before another phase can start. On top of which rather than simply listing costs like generic project management software would, it allows you to split the costs allocated to each phase into materials, labour and plant. It also has lots of functions specific to builders and will produce graphs and histograms to assist with cash flow management throughout the job.

## PERFECT COMBINATION

You can use ProjectXpert in tandem with EstimatorXpress allowing you to import your EstimatorXpress bar chart into it including all labour, material and plant costs. As you make amends on the job then export back to EstimatorXpress to reschedule all your deliveries and management reports.

## ULTIMATE EFFICIENCY FROM YOUR PROJECTS

You might think that your spreadsheet and word processing systems are man enough for your requirements, but are they as profitable as they could be? Imagine being able to merge all the jobs you have on the go and see whether you can better utilise your labour, how your material is being distributed, where your equipment is on any one day. And how helpful would it be to email from the software to colleagues, sub-contractors and clients? Or see the impact of changes on the program to completion? Read on!

**project Xpert**  
Keeping your projects on time and budget  
HEXL

Compatible with Windows 7  
FEATURING xconnex DATA SHARING TECHNOLOGY

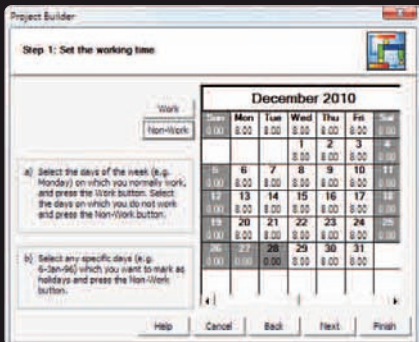
**EFFICIENCY FOR ALL TRADES**  
Suitable for all builders, contractors, subcontractors, company owners and project managers

**For a full rundown call Ian on 0845 1234 065**

**System requirements:**  
Windows® XP (SP2) / Windows® Vista / Windows® 7; Pentium P4 700GHz; 256MB Ram; 100MB Disk space; Internet Connection; SVGA monitor; Pointing Device; Printer & CD ROM drive.



# SO I CAN TRACK TASKS, FINANCES AND AMENDS?

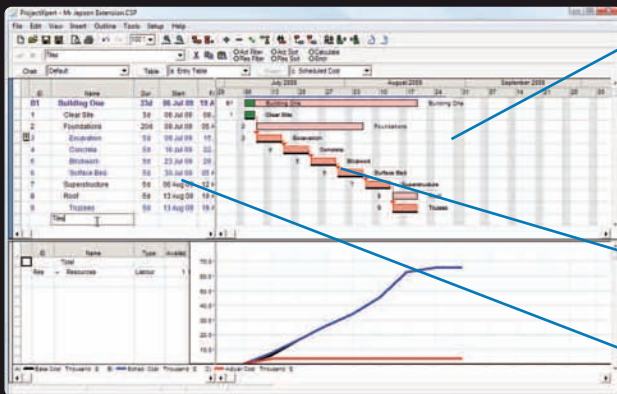
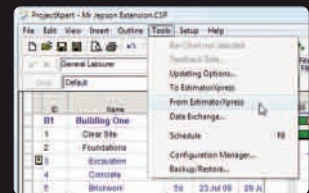


## STEP 1. SET UP YOUR PROJECT & CALENDAR

It's easy to create a new project using the Project Builder. Enter your project details quickly and simply, giving your project a title, start date and tell it your hours of work e.g. 8am-5pm / 24/7 call out service or when you can't get access to site.

## EVEN QUICKER STILL!

Links with EstimatorXpress v.8 (and upwards) so you can import your EstimatorXpress job into ProjectXpert and it will automatically create your build program in seconds! It also imports all your resource and cost information to make Step 3 a doddle!



ProjectXpert will build the chart as you go.

## STEP 2. CREATE TASKS

It's really quick! All you do is list the tasks that need to be carried out by entering them into the activity spreadsheet giving each a description, duration and start date.

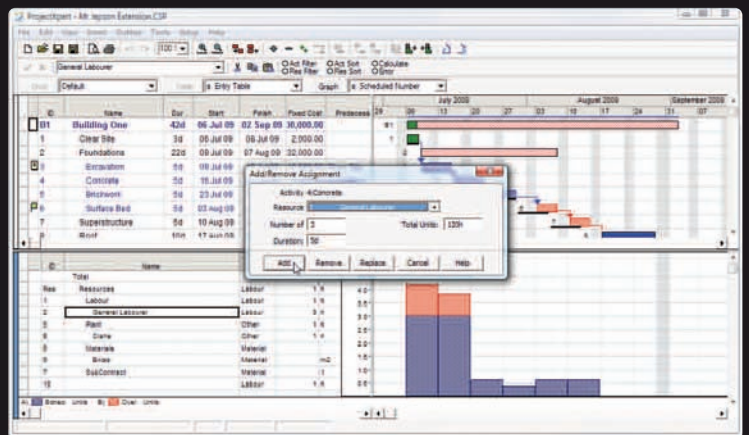
You can define the dependencies between the phases to build your Critical Path to define the order in which tasks must occur

Note you can have sub phases too to indicate that these need to be completed in order for the main Task to be completed.

## STEP 3. ASSIGN RESOURCES AND ESTIMATED COSTS

To use the software to the max, assign resources (such as materials, labour or plant) to each individual task and ProjectXpert will then give you charts to see where resources are over or under-allocated.

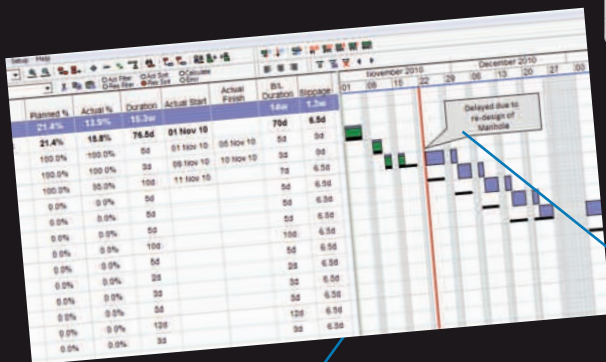
Happy with your build program? Store a baseline to provide you with a snap shot of what things should have been happening and when versus any changes later made to the program to show 'as built versus program'



## STEP 4. PRINT!

Keep everyone in the loop and improve communication between you and your contractors, your customers and not to mention the bank manager! Print multi-page/wall chart or copy to clipboard to be sent by email.

Text and graphic annotations can be placed anywhere on barchart/histogram.



Add payment dates to show the customer what they need to pay and when.

You can also export your reports in to Microsoft Excel and various accounting software packages for ultra flexibility!

# HOW CAN I BE LEGALLY COVERED WITHOUT SPENDING TIME AND MONEY?

## TOP QUALITY BUILDING CONTRACTS FOR THE TRADE

HBXL have joined forces with the Federation of Master Builders, the leading trade organisation, to make sure you - and your customers - know exactly where you stand before your commence on any building project. The contracts detail the work covered, its value, obligations, payment timings, defects, termination, warranties, insurance, dispute resolution and more!

## CONTRACTS THAT PROTECT EVERYONE

Consumer organisations now encourage home owners to be wary of any builder who is unwilling to enter into a contract - it won't put the customer off and you'll stand a greater chance of winning the work and that you get paid, on time for the work you've done.

## WE DO THE HARD WORK FOR YOU

Contracts authored by FMB and transformed into a user-friendly software package by HBXL - ContractsXpert requires very little input from you. In fact, if you use EstimatorXpress it will even import the project data from your estimate, making it quicker still!

## EASY TO USE AND EASY TO UNDERSTAND

Here at HBXL we are really impressed with the quality of FMB's contracts. Written in Plain English and accredited with the Crystal Mark, the contracts are thorough without being scary! So let us keep you safe not sorry. Read on!

**System requirements:**  
 1GHz Processor, 10MB Hard Drive Space, 256 MB RAM, CD ROM Drive, Windows® 2000, XP, 2003, Vista, 7, Internet Connection, SVGA Monitor, Pointing Device & Printer.

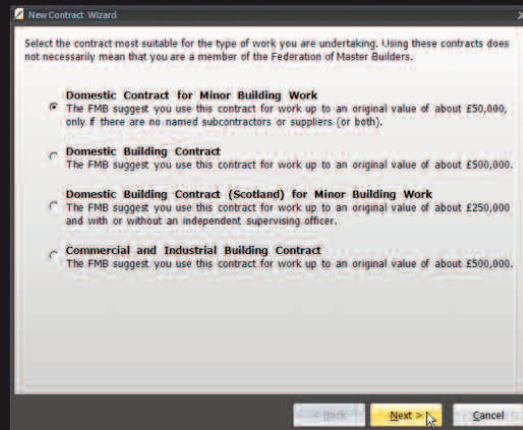


# SO IT'S A CERTIFIED FMB CONTRACT THAT LEGALLY COVERS ME FROM START TO FINISH?



## STEP 1. CHOOSE YOUR CONTRACT

Select the most suitable contract and enter your project details quickly and easily.



### EVEN QUICKER!

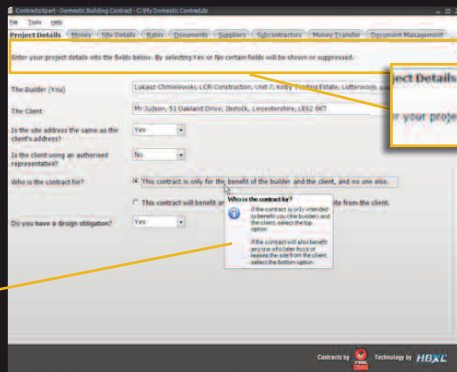
Links with EstimatorXpress v.7 (and upwards). So you can import your EstimatorXpress job into ContractsXpert and it will automatically author all the relevant paperwork in seconds!

Easy to create new contracts using the step-by-step wizard.

## STEP 2. REVIEW

Once all the project details have been entered, quickly review.

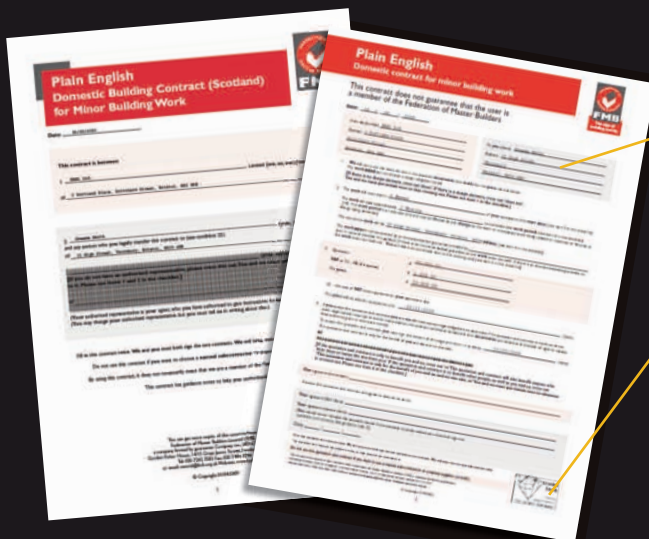
Easily manage your project. Track agreed changes to the work in your contract as the project progresses. Archive your contracts for future reference.



Guidance notes along the way.

## STEP 3. PRINT!

That's all there is to it! Then print your comprehensive, easy to follow contract.



Contracts include guidance notes and a checklist of items to ensure all points are covered.

All of FMB's contracts have been awarded the Crystal Mark seal of approval for clear communication.

**Choice of 4 comprehensive contracts**

- Plain English Domestic Building Contract for Minor Building Work (up to £50k)
- Plain English Domestic Building Contract (Scotland) for Minor Building Work (up to £250k)
- Plain English Domestic Building Contract (up to £500k)
- Plain English Commercial & Industrial Building Contract (up to £500k)

**PLUS**

- Notice of the right to cancel
- Cancellation form
- Starting the work form
- Changing the Work form

# IT'S A PARTNERSHIP. AND WE'RE MAD ABOUT YOUR BUSINESS.

Customer Focus or perhaps it should be Builder Focus is numero uno for us. We don't sell CDs we sell builder-specific business solutions. We're here to help you the builder, contractor, tradesman or woman get to grips with IT and discover how it can help your business grow – before and after you make your purchase.

## PLENTY OF WAYS TO DISCOVER THE BENEFITS

We've a whole load of resources for you to have a play with, read up on, watch, and listen before you buy. And since you're on site most of the time - we can chat at a time to suit you.

- COMPREHENSIVE WEBSITE INFO AT [WWW.HBXL.CO.UK](http://WWW.HBXL.CO.UK)
- HAVE A DEMO WITH ONE OF THE TEAM VIA THE INTERNET
- A FREE TRIAL OF THE SOFTWARE
- VIDEO TESTIMONIALS
- EXHIBITIONS AND SEMINARS

Just call us on **0845 1234 065** and we can make it happen. Then when you're ready to make the best business decision of your life - well you can buy outright, pay in installments or even rent.

## SUPPORTING YOUR BUSINESS EVERY STEP

Once you become an 'HBXL builder' we don't cut and run – far from it. With each software package you purchase from HBXL you receive a year's Support & Updates subscription. This gives you access to all online and telephone technical support, software updates and software upgrades – so you know you're always using the very latest technology with bang up-to-date information. Plus...

- COMPREHENSIVE TUTORIAL GUIDES
- VIDEO TUTORIALS
- WEBINARS
- FORUMS
- LIVE CHAT
- TRAINING WORKSHOPS
- INDIVIDUAL TRAINING
- ONLINE TRAINING
- INDUSTRY NEWS VIA TWITTER



**SINCE YOU'D RATHER BE BUILDING THAN PAPERWORKING - THANK GOODNESS YOU'VE GOT HBXL ON YOUR SIDE**



# WE'LL KEEP YOU UPDATED, UPGRADED AND UPBEAT ABOUT THE FUTURE...WE PROMISE!

Because we're so darn passionate about supporting you we promise that...

**1.** You'll get to speak to a human being in the UK - and if you call us out of hours our help team will phone you back first thing in the morning

**2.** You can also speak to us by our website Live Chat service or email - whichever suits you. Responses are provided by a person - not a computer!

**3.** You'll get our knowledge and enthusiasm. Our team know the software back to front and have all been highly trained PLUS we have dedicated product specialists.

**4.** We'll be here to help. Ever practical we use gadgets like Logmein® which means we can log into your computer should you experience any difficulties. We hope you won't but if you do, we'll be onto it pronto so you're back up and running in no time!

**5.** We'll invest a minimum 25% of turnover back in to R&D to bring you the very latest software solutions and supply printed, online or in-built tutorials with our software as standard. No cost cutting here!

And if after all that you're not happy with us then you can rely on our money-back guarantee. We guarantee that if you aren't happy with your software, because we can't resolve your issue within one month of receiving the software, you can send it back for a full refund - but we're pretty sure it won't ever come to that! See the website for all the blurb...

JO Keith Ami Sarah Matt  
John Anthony Steven Marc Chris Robert  
Adrian Amy Ed Paula Ian Simon  
Gareth



**HAVE  
A CHAT ON  
0845 1234 065  
OR EXPLORE  
www.hbxi.co.uk**



# **HBXL**

***your partner in success***

**BUSINESS-BUILDING SOFTWARE**